

## This document contains:

- The Event Covid-19 risk assessment and risk mitigation plan in accordance with the [FEI Policy for Enhanced Competition Safety during the Covid-19 Pandemic](#)
- The Event Approved Schedule

*Given the current covid-19 situation, please note that the FEI's approval of a Schedule should not be taken as an absolute guarantee that the Event will definitely go ahead. The decision whether the Event can take place must be made by the OC and NF in close consultation with the applicable domestic government and public health authorities. It is the responsibility of each Participant to check the status of the Event prior to planning his/her travel to the Event.*

## Mass gathering risk assessment for COVID-19: addendum for sporting events

The questions below will enable sport event organizers to review the additional considerations specific to sporting events involving mass gatherings, and thus inform their risk assessment of COVID-19 associated with the event. This will help organizers to understand and manage any additional risk from COVID-19.

The risk assessment should be reviewed and reassessed regularly during the planning phase and updated immediately prior to the transition to the operational phase, especially in light of the rapidly evolving nature of the outbreak. Reference should be made to the latest technical guidance and situation reports on the WHO website.

The risk assessment for COVID-19 associated with the sporting event must be coordinated and integrated with the host country's national risk assessment for COVID-19. The person completing the questionnaire should include input from the local public health authorities, consult WHO's latest technical guidance and ensure that there is an up-to-date evaluation of the epidemiological situation.

### Risk assessment

Please answer Yes (1) or No (0) to the following questions to determine a risk assessment score that incorporates factors specific to mass gathering sporting events

Additional risk of COVID-19 to the mass gathering sporting event	Yes (1)/No (0)	Score
Will the event be held in a country that has documented active local transmission of COVID-19 (community transmission)?	1	1
Will the event be held in a single venue or multiple venues/cities/countries?	0	0
Will the event include international participants (athletes and spectators) from countries that have documented active local transmission of COVID-19 (community transmission)?	1	1
Will the event include a significant number of participants (athletes or spectators) at higher risk of severe COVID-19 disease (e.g., people over 65 years of age, people with underlying health conditions)?	0	0
Will the event include sports that are considered at higher risk of spread for COVID-19 (eg, contact sports)?	0	0
Will the event be held indoors?	0	0
<b>Total COVID-19 risk score</b>		<b>2</b>

## Mass gathering mitigation checklist for COVID-19: addendum for sporting events

Mitigation measures assess the current effort and planning to reduce the risk of spread of COVID-19 disease for the event. As mitigation measures can reduce the overall risk of the mass gathering contributing to the spread of COVID-19,

Topic	Key consideration	Score Yes/Completed (2), Maybe/In progress (1), No/Not considered (0)	Weighting	Total score	Comments
Understanding of the overview of the current COVID-19 situation by the event organizers	Have the relevant organizers and responsible staff been informed about the <b>latest available guidance on the COVID-19 outbreak</b> (official web resources available from WHO, CDC, ECDC, UN, local public health authorities)? And are the organizers and staff concerned committed to following the available guidance?	2	1	2	( <a href="https://www.who.int/publications-detail/key-planning-recommendations-for-mass-gatherings-in-the-context-of-the-current-covid-19-outbreak">https://www.who.int/publications-detail/key-planning-recommendations-for-mass-gatherings-in-the-context-of-the-current-covid-19-outbreak</a> )
	Are organizers aware of <b>global and local daily situation reports</b> as provided by WHO or local public health authorities?	2	1	2	
	Do the organizers and responsible staff understand the <b>risks and transmission routes of COVID-19, the steps that event attendees can take to limit spread, the recognized best practices</b> (including respiratory etiquette, hand hygiene, physical distancing, etc.), and the <b>travel restrictions</b> adopted by different countries that may affect the mass gathering?	2	1	2	attached COVID-19 Contingency and Mitigation Plan
	Has a <b>contingency medical response plan for COVID-19</b> been developed for this mass gathering sporting event?	2	3	6	attached COVID-19 Contingency and Mitigation Plan
	Does the contingency medical response plan include <b>information about how attendees should interact with the host country healthcare system</b> (e.g. hotline/helpline telephone number, medical teams and first-aid points for the mass gathering, local health care system)?	2	3	6	attached COVID-19 Contingency and Mitigation Plan
	Is there an <b>Emergency COVID-19 Outbreak Response Coordinator/Team</b> in the organizing committee or other structure structure for the mass gathering with defined roles and responsibilities, coordinating the health preparedness and response planning for the outbreak?	2	2	4	attached COVID-19 Contingency and Mitigation Plan
	Has the host country or organizer requested <b>support from WHO and/or local public health authorities</b> ?	2	3	6	
	<b>Have the organizers of the mass gathering event acquired the following supplies to help reduce the risk of transmission of COVID-19?</b>				
	Personal protective equipment (e.g. masks, gloves, gowns) for onsite medical personnel	2	3	6	attached COVID-19 Contingency and Mitigation Plan
	Hand sanitizer and alcohol rubs/gels, tissues, frequently replaced soap canisters and closed bins for safe disposal of hygienic materials (e.g. tissues, towels, sanitary products) in washrooms and changing rooms	2	3	6	attached COVID-19 Contingency and Mitigation Plan
	Hand sanitizers and alcohol rubs for all entrances and throughout the venue	2	3	6	attached COVID-19 Contingency and Mitigation Plan
	<b>If a person feels unwell/ shows symptoms of an acute respiratory infection during the event:</b>				
	Is there a procedure for athletes or spectators to clearly identify <b>whom to contact and how to do so</b> if they or other event participants feel unwell?	2	3	6	attached COVID-19 Contingency and Mitigation Plan
	Is there a protocol on <b>whom meeting organizers should contact in the host country</b> to report suspected cases and request testing and epidemiological investigations?	2	3	6	attached COVID-19 Contingency and Mitigation Plan
	Are <b>first-aid services or other medical services</b> in-place and equipped to support patients with respiratory symptoms?	2	2	4	Medical Services present at the venue during the event

<b>Event emergency preparedness and response plans</b>	Are there <b>isolation rooms or mobile isolation units</b> available onsite?	2	2	4	attached COVID-19 Contingency and Mitigation Plan
	Are there any <b>designated medical facilities</b> that manage patients with COVID-19 infection in the host country?	2	2	4	Portuguese National Health Service
	Are there <b>transportation services with trained medical professionals</b> available to transport critically ill patients with severe acute respiratory infections to a hospital or to evacuate them from the host country, if necessary?	2	2	4	Medical Services present at the venue during the event / National Health Service
	Has a <b>cleaning schedule</b> been developed to ensure the venue is clean and hygienic – wiping surfaces and any equipment regularly with disinfectant is strongly recommended (before, during and after the event and between each round of competition)?	2	3	6	attached COVID-19 Contingency and Mitigation Plan
	Are there established <b>screening measures</b> , including temperature checks in place for participants at the point of entry, venues, routes and on-site medical facilities (first-aid points)? (Please specify in Comments what these screening measures include)	2	3	6	attached COVID-19 Contingency and Mitigation Plan
	Is the host country conducting COVID-19 <b>laboratory diagnostic tests</b> ? (If Yes, please specify in comments the type of COVID-19 diagnostic test used)	2	3	6	Portugueses National Health Service and private laboratories - Tests which detect the presence of the virus SARS-CoV-2 and tests that detect the imunity or possible imunity response to the virus (ex. serological tests)
	Does the host country have a <b>national public health emergency preparedness and response plan</b> that can address severe respiratory diseases, including COVID-19?	2	2	4	Portuguese National Health Service
	Is there a <b>preliminary agreement by the host country to provide care</b> for any COVID-19 cases connected with the mass gathering?	2	3	6	Portuguese National Health Service
	If the event is for a duration of 14 days or longer, does the medical response plan for the event include resources and protocols for managing all public health interventions that would be necessary and supporting the national public health authorities if participants are infected and become unwell at the event? (If the event is for less than 14 days, please score 0)	2	3	6	<b>attached COVID-19 Contingency and Mitigation Plan</b>
If the event is for less than 14 days, does the medical response plan include protocols for organizers to notify all participants of possible exposure to COVID-19 if the organizers are made aware of any suspected or confirmed cases that attended the event? (If the event is for 14 days or longer, please score 0)	0	3	0		
<b>Stakeholder and partner coordination</b>	Is there an established mechanism for collaboration and coordination between <b>the health and security sectors</b> , which is considered as crucial?	2	2	4	Portuguese National Health Service
	Are there agreed, clear and easily understood processes in place for <b>reporting to external multi-sectoral stakeholders</b> (including surveillance authorities, WHO, CDC, ECDC, etc.) and disseminating risk communication messages (Media)?	2	2	4	Portuguese National Health Service
<b>Command and control</b>	Is there a decision-making authority/body and an agreed procedure to <b>modify, restrict, postpone or cancel the mass gathering sporting</b> event related to the evolving COVID-19 outbreak?	2	3	6	Portuguese National Health Service
	Are there arrangements to activate a <b>strategic health operations centre</b> if there are suspected COVID-19 cases in connection with the sporting mass gathering?	2	2	4	Portuguese National Health Service
	Have the mass gathering organizers and staff <b>undergone training and exercises</b> on personal safety procedures and emergency mitigation measures (including those specifically listed in this checklist)?	2	3	6	attached COVID-19 Contingency and Mitigation Plan
	Is there a <b>risk communication strategy</b> for the sporting mass gathering in regard to COVID-19?	2	3	6	

Risk communication	Is there a <b>designated person(s) to lead media</b> activities and tasked with managing all external communications with national and international government officials, the general public, and the media? (If yes, please identify the spokesperson in comments)	2	2	4	Name: Carlos Carmo (Town Council Loule)
	Has there been <b>monitoring of national and international media and social media</b> established for <b>rumours</b> to be able to counter them early? (Please explain in the comments what protocols are in place for counter messaging)	1	2	2	
	Has coordination been set up with major <b>official media channels and social media</b> sites such as Twitter, Facebook and Instagram so that messaging can be coordinated with, and assisted by, the platforms to provide targeted messaging from organizers (including messaging to counter fake news and rumours, and proactive messaging about the status of the mass gathering, including changes)?	2	2	4	
Public health awareness of COVID-19 before and during the event	Has <b>public health advice</b> on clinical features of COVID-19, preventive measures, especially respiratory etiquette, hand hygiene practices, and physical distancing, been shared with all staff involved in the event, athletes, the public, and personnel of all relevant stakeholders?	2	3	6	attached COVID-19 Contingency and Mitigation Plan
	Has information on the <b>at-risk populations</b> been provided to all athletes, the public and others so they may make an informed decision on their attendance based on their personal risks?	2	3	6	attached COVID-19 Contingency and Mitigation Plan
	Has public advice included information on the meaning of the following <b>measures: quarantine, self-isolation and self-monitoring?</b>	2	2	4	attached COVID-19 Contingency and Mitigation Plan
Surge capacity	<b>Are there any surge arrangements in place in the event of a public health emergency during the mass gathering - (i.e.</b>				
	Do these surge arrangements include funding for mitigation measures?	2	3	6	
	Do these surge arrangements include stockpiles of equipment (e.g. personal protective equipment, etc.)	2	3	6	
	Do these surge arrangements include training of extra staff?	2	2	4	
	Do these surge arrangements include volunteers?	2	2	4	
Specific mitigation measures	Will there be <b>daily health checks</b> of athletes/competitors?	2	2	4	attached COVID-19 Contingency and Mitigation Plan
	Will the <b>athletes be separated from other groups</b> , such as officials, support staff and spectators, to limit transmission?	2	2	4	attached COVID-19 Contingency and Mitigation Plan
	Are there measures in place to <b>limit the sharing of equipment, water bottles, towels, etc.?</b>	2	3	6	attached COVID-19 Contingency and Mitigation Plan
	Will athletes be given closed <b>containers to allow for the safe disposal or storing of all hygienic materials</b> (e.g. tissues, towels, etc.)?	2	3	6	attached COVID-19 Contingency and Mitigation Plan
	Will the sporting event have <b>designated seating</b> for all spectators?	2	3	6	No public: attached COVID-19 Contingency and Mitigation Plan
	Does the designated <b>seating provided allow for physical distancing</b> between spectators (minimum of 1 metre)?	2	2	4	No public: attached COVID-19 Contingency and Mitigation Plan
	Have <b>pre-travel health checks</b> been performed on all athletes to ensure underlying co-morbidities, medications, allergies, etc. are documented?	2	2	4	

Sum of mitigation measures	218
<b>Total mitigation score (%)</b>	<b>99</b>

218

## Mass gathering overall risk score: addendum for sporting events

The decision matrix takes the risk score and the mitigation score to provide a colour determination. This colour determination identifies the total risk of transmission and further spread of COVID-19 in relation to the mass gathering. The "Colour Determination" key below the decision matrix describes the total risk for each colour.

<b>Total COVID-19 Risk Score (from "Risk Assessment" Tab)</b>	<b>2</b>
---	----------

<b>Total mitigation score (from "Mitigation Checklist" Tab)</b>	<b>99</b>
---	-----------

### Risk Vs. Mitigation Matrix

<b>Total Risk Assessment Score</b>	<b>Very Prepared to Mitigate COVID-19 Impacts (76-100)</b>	<b>Somewhat Prepared to Mitigate COVID-19 Impacts (51-75)</b>	<b>Somewhat Unprepared to Mitigate COVID-19 Impacts (26-50)</b>	<b>Very Unprepared to Mitigate COVID-19 Impacts (0-25)</b>
<b>0 - Negligible</b>	Very low	Very low	Very low	Very low
<b>1 - Very Low Risk</b>	Very low	Very low	Low	Low
<b>2 - Low Risk</b>	Low	Low	Low	Moderate
<b>3 - Moderate Risk (low-moderate)</b>	Low	Moderate	Moderate	Moderate
<b>4 - Moderate Risk (high-moderate)</b>	Moderate	Moderate	High	Very High
<b>5 - High Risk</b>	High	High	Very High	Very High
<b>6 - Very High Risk</b>	Very High	Very High	Very High	Very High

<b>KEY FOR COLOUR DETERMINATION OF OVERALL RISK</b>	
<b>VERY LOW</b>	Overall risk of transmission and further spread of COVID-19 in relation to the mass gathering is considered <u>very low</u> .
<b>LOW</b>	Overall risk of transmission and further spread of COVID-19 in relation to the mass gathering is considered <u>low</u> . Recommend checking whether mitigation measures can be strengthened.
<b>MODERATE</b>	Overall risk of transmission and further spread of COVID-19 in relation to the mass gathering is considered <u>moderate</u> . Recommend <u>significant</u> efforts to improve mitigation measures or reduce risk of transmission (decrease risk assessment score).
<b>HIGH</b>	Overall risk of transmission and further spread of COVID-19 in relation to the mass gathering is considered <u>high</u> . Recommend <u>significant</u> efforts to improve <u>both</u> mitigation measures and reduce risk of transmission (decrease risk assessment score).
<b>VERY HIGH</b>	Overall risk of transmission and further spread of COVID-19 in relation to the mass gathering is considered <u>very high</u> .



## **EUROPEAN CHAMPIONSHIPS**

### **Young Riders, Juniores & Childrens**

**Vilamoura 18 – 25 July 2021**

## **COVID-19 CONTINGENCY AND MITIGATION PLAN**

### **ISECURITY PROCEDURES**

#### **PARTICIPANTS, ATHLETES, STAFF PERSONNEL, OFFICIALS, EMPLOYEES AND AUTHORIZED PERSONNEL**

All participants, such as athletes, staff personnel, officials, employees and any other authorized personnel undertake to comply with the standards of good hygienic and sanitary conduct implemented by the National Health Services (DGS) and the code of conduct of this Manual of Protecting Procedures.

Athletes participating in the CSIs and CSNs Vilamoura, their coaches and individuals directly connected to the athlete, who do not show signs or symptoms of COVID-19 such as: fever, cough, breathing difficulties, loss of smell and taste, nasal discharge, sore throat, headache, muscle pain, joint pain, tiredness, diarrhea, are allowed to use the facilities of the Vilamoura Equestrian Centre on the 25<sup>th</sup> January till the 07<sup>th</sup> March 2021

#### **Access Control:**

An access control with standard Covid-19 screening questions and temperature check will be performed at the entrance of the venue where the competitions take place (one entrance door with 2 different ways - in and out)

#### **Access and Circulation on the facilities (venue perimeter)**

The access to the Vilamoura Equestrian Centre must be done in a proper vehicle, respecting the DGS indications

The circulation inside the facilities must be done complying the instructions of the Organizing Committee

It is mandatory the use of masks in all areas/facilities.

There will be alcohol-based hand rub at the entrance of the different facilities (show office, judge box, training arena, Wc)

**A minimum physical distance of 2 meters between individuals on foot and 3 meters when mounted must be complied.**



### **Show Office**

The OC advises all participants to install the App "Online Equipe", where they have access to all information (such as schedules, timetables, competitions, starting orders and results) in order to reduce the need of participants and staff to enter the show office

One person at a time inside the show office is allowed. The remain shall wait in a queue outside the show office keeping a minimal distance of 2 meters from each other

The use mask inside the show office is mandatory

Payments should be done preferably by credit card or bank transfer (disinfection is done after the use of the terminal)

### **Stable Area**

Stables are installed in open areas

Minimum physical distance of 2 meters between individuals must be complied

Use of gloves when handling common equipment

Frequent collection of garbage points

### **Training and Main Arenas**

Maximum number of horses in the Training Arena on flat work: 15 horses

Maximum number of horses in the Training Arena when jumping: 12 horses

Maximum number of horses in the main arena: 3 horses

It is advisable the wear of gloves when handling obstacles in the training arena

The rider's individual equipment (headgear, gloves, stick) should not be shared

### **Judge Box**

Only officials, speakers, timing and informatic services shall be allowed access

Individuals shall be seated side by side and as far as possible from each other

It is mandatory the use of masks in closed judge boxes and optional in opened judge boxes

Closed judge boxes shall be well ventilated

Disinfection of working tools (such as bell, start/stop button, microphones, etc) whenever there is a change of function between officials





### **WC and Showers**

Daily and frequent disinfection of spaces

Provision of paper hand towels

2 users maximum

### **Canteens**

The Government and National Health Service (DGS) guidelines will be applied

### **Bleachers and Public**

Not open to the public. The competitions will take place behind closed doors.

**Final Note:** During their stay outside the Vilamoura Equestrian Centre athletes and people connected to them must comply with all rules and recommendations of the DGS regarding social distance, brathing etiquette, etc.

### **Contingency Plan during the Competition:**

1) In case of detection of a suspicious case:

On-duty medical assistance or the person responsible (Carolina Fontaneda Tel +34 630 892 269) must:

Put on a mask and gloves, before approaching the suspicious case

Hand mask and gloves to the person with signs of illness

Lead the individual to the isolation room, according to what is outlined on the plan, avoiding contact with other people and keeping the recommended distances.

Identification and registration of all facilities frequented by the person in question and the contacts established by him/her in those places with other individuals

2) The person with signs of illness:

Follow the guidelines given

Contact the National Health Line SNS24 (+351 808 24 24 24) and follow the instructions given by the national department

Signages to be posted at the facilities:

## Wash your hands

Wash your hands with soap and running water when **hands are visibly dirty**



If your **hands are not visibly dirty**, frequently clean them by using alcohol-based hand rub or soap and water

Protect yourself and others from getting sick

## Wash your hands



- after coughing or sneezing
- when caring for the sick
- before, during and after you prepare food
- before eating
- after toilet use
- when hands are visibly dirty
- after handling animals or animal waste



World Health  
Organization

## Protect others from getting sick

When coughing and sneezing  
**cover mouth and nose** with  
flexed elbow or tissue



**Throw tissue into closed bin**  
immediately after use

**Clean hands** with alcohol-based  
hand rub or soap and water  
after coughing or sneezing and  
when caring for the sick



World Health  
Organization

## Protect others from getting sick



**Avoid close contact** when you are experiencing cough and fever

**Avoid spitting in public**



If you have fever, cough and difficulty breathing **seek medical care early** and share previous travel history with your health care provider

Yes. Respiratory viruses can be passed by shaking hands and touching your eyes, nose and mouth.

Greet people with a wave, a nod or a bow instead.

Should I avoid shaking hands because of the new coronavirus?



# HOW TO WEAR A MEDICAL MASK SAFELY

[who.int/epi-win](http://who.int/epi-win)

## Do's →



Wash your hands before touching the mask



Inspect the mask for tears or holes



Find the top side, where the metal piece or stiff edge is



Ensure the colored-side faces outwards



Place the metal piece or stiff edge over your nose



Cover your mouth, nose, and chin



Adjust the mask to your face without leaving gaps on the sides



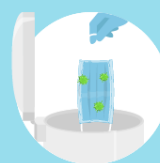
Avoid touching the mask



Remove the mask from behind the ears or head



Keep the mask away from you and surfaces while removing it



Discard the mask immediately after use preferably into a closed bin



Wash your hands after discarding the mask

## Don'ts →



Do not Use a ripped or damp mask



Do not wear the mask only over mouth or nose



Do not wear a loose mask



Do not touch the front of the mask



Do not remove the mask to talk to someone or do other things that would require touching the mask



Do not leave your used mask within the reach of others



Do not re-use the mask

Remember that masks alone cannot protect you from COVID-19. Maintain at least 1 metre distance from others and wash your hands frequently and thoroughly, even while wearing a mask.

**I. DENOMINATION OF THE EVENT**

**Venue:** VILAMOURA - FEI Jumping European Championship Y-J-Ch

**Date:** 18-25 July 2021 **NF:** POR

**Indoor:**  **Outdoor:**

**EVENT CATEGORIES:**

- |                                 |                                  |                                  |                                   |                                   |
|---------------------------------|----------------------------------|----------------------------------|-----------------------------------|-----------------------------------|
| CSIO5* <input type="checkbox"/> | CSI5*-W <input type="checkbox"/> | CSI5* <input type="checkbox"/>   | CSIU25-A <input type="checkbox"/> | CSIU25-B <input type="checkbox"/> |
| CSIO4* <input type="checkbox"/> | CSI4*-W <input type="checkbox"/> | CSI4* <input type="checkbox"/>   | CSIY-A <input type="checkbox"/>   | CSIY-B <input type="checkbox"/>   |
| CSIO3* <input type="checkbox"/> | CSI3*-W <input type="checkbox"/> | CSI3* <input type="checkbox"/>   | CSIJ-A <input type="checkbox"/>   | CSIJ-B <input type="checkbox"/>   |
| CSIO2* <input type="checkbox"/> | CSI2*-W <input type="checkbox"/> | CSI2* <input type="checkbox"/>   | CSIch-A <input type="checkbox"/>  | CSIch-B <input type="checkbox"/>  |
| CSIO1* <input type="checkbox"/> | CSI1*-W <input type="checkbox"/> | CSI1* <input type="checkbox"/>   | CSIV-A <input type="checkbox"/>   | CSIV-B <input type="checkbox"/>   |
| CSIOY <input type="checkbox"/>  |                                  | CSIL1* <input type="checkbox"/>  | CSIAm-A <input type="checkbox"/>  | CSIAm-B <input type="checkbox"/>  |
| CSIOJ <input type="checkbox"/>  |                                  | CSIYH2* <input type="checkbox"/> | CSIP <input type="checkbox"/>     |                                   |
| CSIO P <input type="checkbox"/> |                                  | CSIYH1* <input type="checkbox"/> |                                   |                                   |
| CSIOCh <input type="checkbox"/> |                                  |                                  |                                   |                                   |

Championship  Games

**II. GENERAL CONDITIONS**

- FEI Statutes, 24<sup>th</sup> edition, effective 19 November 2019
- FEI General Regulations, 24<sup>th</sup> edition, 1<sup>st</sup> January 2020, updates effective 1<sup>st</sup> January 2021
- FEI Veterinary Regulations, 14<sup>th</sup> edition, 1 January 2018, updates effective 1<sup>st</sup> January 2021
- The Jumping Rules and its Annexes, 26<sup>th</sup> edition 1 January 2018, updates effective 1 January 2021
- <https://inside.fei.org/fei/regulations/jumping>
- CSI/CSIO Prize Money requirements 2020 – To be applied also for 2021
- <https://inside.fei.org/sites/default/files/Final%20CSIs-CSIOs%20-%202020.pdf>
- Longines Rankings – Groups Categories 2020 – To be applied also for 2021
- <https://inside.fei.org/sites/default/files/Final%20Longines%20Ranking%20Groups%20-%202020.pdf>
- Equine Anti-Doping and Controlled Medication Regulations (EADCMR), 3<sup>rd</sup> Edition, effective 1<sup>st</sup> January 2021
- FEI Anti-Doping Rules for Human Athletes (ADRHA), based upon the 2021 WADA Code, effective 1<sup>st</sup> January 2021
- The FEI Policy for Enhanced Competition Safety during the Covid-19 Pandemic, effective as of 1 July 2020 (updated 12 October 2020) and until further notice
- All subsequent published revisions/updates, the provisions of which will take precedence.

\*\*\*\*\*

**THE ANNEXE(S) IS/ARE PART OF THIS APPROVED AND SIGNED SCHEDULE AND MUST BE DISTRIBUTED TO ALL OFFICIALS AND NFs AND IS AVAILABLE TO OTHERS UPON REQUEST**

Approved by the FEI, Lausanne, on 15/06/2021. Updated on 09/07/2021, 19/07/2021.



Marco Fusté  
 Jumping Director

**NB: No modifications to the approved Schedule will be accepted less than two weeks prior to the event. Additionally, no change may be made to a Longines Ranking competition once the schedule has been approved. Prizes in kind, to be accepted as prize money to count for Longines Ranking competitions and total event prize money, must be easily convertible into cash (GRs Art. 127).**



**TABLE OF CONTENTS**

<b>I.</b>	<b>DENOMINATION OF THE EVENT .....</b>	<b>1</b>
<b>II.</b>	<b>GENERAL CONDITIONS .....</b>	<b>1</b>
<b>III.</b>	<b>THE FEI CODE OF CONDUCT FOR THE WELFARE OF THE HORSE .....</b>	<b>3</b>
<b>IV.</b>	<b>GENERAL INFORMATION .....</b>	<b>4</b>
1.	ORGANISER .....	4
2.	ORGANISING COMMITTEE .....	4
3.	EVENT DIRECTOR .....	4
4.	STABLE MANAGER.....	4
5.	ANNOUNCER .....	4
<b>V.</b>	<b>OFFICIALS .....</b>	<b>5</b>
<b>VI.</b>	<b>INVITATIONS .....</b>	<b>7</b>
1.	GENERAL.....	7
<b>VII.</b>	<b>ENTRIES .....</b>	<b>9</b>
1.	ENTRY DATES AND ENTRY FEES.....	9
2.	OTHER FEES .....	10
3.	NO-SHOWS/LATE WITHDRAWALS.....	11
<b>VIII.</b>	<b>TIMETABLE.....</b>	<b>12</b>
<b>IX.</b>	<b>COMPETITION DETAIL.....</b>	<b>15</b>
<b>X.</b>	<b>FACILITIES OFFERED.....</b>	<b>30</b>
1.	ATHLETES.....	30
2.	GROOMS.....	30
<b>XI.</b>	<b>LOGISTICAL/ADMINISTRATIVE/TECHNICAL INFORMATION .....</b>	<b>31</b>
1.	DRAW .....	31
2.	COMPETITION ARENA(S) .....	31
3.	PRACTICE ARENA(S) .....	31
4.	STABLES .....	31
5.	SAFETY CUPS.....	32
6.	TIMING DEVICE .....	32
7.	SCORING/TIMING PROVIDER.....	32
8.	OTHER TECHNOLOGY/SERVICE PROVIDER(S) .....	32
9.	PRIZE GIVING CEREMONY .....	32
10.	ADVERTISING ON ATHLETES AND HORSES.....	33
11.	TICKETING.....	33
12.	BETTING.....	33
13.	TRANSPORT REIMBURSEMENT HORSES / PONIES .....	33
14.	WELCOME.....	33
15.	LOCAL TRANSPORTATION - ARRANGEMENTS FROM HOTEL TO SHOWGROUNDS .....	33
16.	ENTRY RIGHT TO SHOWGROUNDS/ACCREDITED PERSONS.....	33
17.	SUSTAINABILITY.....	34
<b>XII.</b>	<b>VETERINARY MATTERS.....</b>	<b>35</b>
1.	CUSTOMS FORMALITIES .....	35
2.	HEALTH REQUIREMENTS .....	35
3.	NATIONAL REQUIREMENTS .....	35
4.	PONIES.....	35
5.	INJURY SURVEILLANCE.....	35
6.	TRANSPORT OF HORSES.....	36
7.	VENUE ARRIVAL INFORMATION & FITNESS TO COMPETE .....	36
8.	EQUINE ANTI-DOPING AND CONTROLLED MEDICATION PROGRAMME (EADCMP). FEI VETERINARY REGULATIONS,	

CHAPTER VII .....	37
<b>XIII. HUMAN ANTI-DOPING .....</b>	<b>38</b>
<b>XIV. ADDITIONAL INFORMATION .....</b>	<b>38</b>
1. THE FEI POLICY FOR ENHANCED COMPETITION SAFETY DURING THE COVID-19 PANDEMIC.....	38
2. INSURANCES AND NATIONAL REQUIREMENTS.....	39
3. PROTESTS/APPEALS.....	40
4. SCHOOLING DURING COMPETITIONS.....	40
5. STEWARDING.....	40
6. DISPUTES .....	41
7. MODIFICATION TO SCHEDULE .....	41
8. ADDITIONAL INFORMATION FROM THE OC.....	41
9. PRIZE MONEY DISTRIBUTION.....	44
10. MAXIMUM NUMBER OF STARTERS PER COMPETITION .....	45
11. GLOSSARY .....	46
<b>XV. ANNEXES.....</b>	<b>48</b>

### **III. THE FEI CODE OF CONDUCT FOR THE WELFARE OF THE HORSE**

The Fédération Equestre Internationale (FEI) expects all those involved in international equestrian sport to adhere to the FEI's Code of Conduct and to acknowledge and accept that at all times the welfare of the horse must be paramount and must never be subordinated to competitive or commercial influences.

1. At all stages during the preparation and training of competition horses, welfare must take precedence over all other demands. This includes good horse management, training methods, farriery and tack, and transportation.
2. Horses and Athletes must be fit, competent and in good health before they are allowed to compete. This encompasses medication use, surgical procedures that threaten welfare or safety, pregnancy in mares and the misuse of aids.
3. Events must not prejudice horse welfare. This involves paying careful attention to the competition areas, ground surfaces, weather conditions, stabling, site safety and fitness of the horse for onward travel after the event.
4. Every effort must be made to ensure that horses receive proper attention after they have competed and that they are treated humanely when their competition careers are over. This covers proper veterinary care, competition injuries, euthanasia and retirement.
5. The FEI urges all involved with the sport to attain the highest levels of education in their areas of expertise.

The Long version of this Code can be obtained from the Fédération Equestre Internationale, HM King Hussein I Building, Chemin de la Joliette 8, 1006 Lausanne, Switzerland. Telephone: +41 21 310 47 47. The Code is available in English. The Code is also available on the FEI's website: <http://inside.fei.org/>.

## **IV. GENERAL INFORMATION**

### **1. ORGANISER**

Name: CLUBE HIPICO DE VILAMOURA  
Address: Estrada de Albufeira, 8125-300 Quarteira  
Telephone: ++351.912 823 389  
Email: vilamouraequestriancentre@gmail.com  
Website: www.vilamouraequestriancentre.com

#### Contact Details Show Ground:

Address: Estrada de Albufeira, 8125-300 Quarteira  
Telephone: ++34.630 892 269/++351.960 308 299  
GPS Coordinates: 37.10270138425996, -8.151050532238287  
Accessibility details (directions by road, nearest airport / train station): Faro airport

### **2. ORGANISING COMMITTEE**

President of the Event: Brion Sanchez, Joao  
Show Secretary: Matos, Maria  
Press Officer: Gomes, Leticia

### **3. EVENT DIRECTOR**

Name: Moura, Antonio  
Address: Estrada de Albufeira, 8125-300 Quarteira  
Mobile: ++351.917 600 969  
Email: [vilamouraequestriancentre@gmail.com](mailto:vilamouraequestriancentre@gmail.com)

### **4. SPORTS DIRECTOR**

Name: Fontaneda, Carolina  
Address: Estrada de Albufeira, 8125-300 Quarteira  
Mobile: ++34.630 892 269  
Email: [vilamouraequestriancentre@gmail.com](mailto:vilamouraequestriancentre@gmail.com)

### **5. STABLE MANAGER**

Name: Martins, Jose  
Telephone: ++351.919136796  
Email: vilamouraequestriancentre@gmail.com

### **6. ANNOUNCER**

Name: Javier de Witt  
Rui Mendes  
Email: vilamouraequestriancentre@gmail.com

## V. OFFICIALS

\* Compulsory

In case there are several categories and officials are not the same, please complete an additional chart per category.

\*\* National Judges may no longer be appointed as Ground Jury members at Events of this category, and may only officiate on the Ground Jury at CSI 1\*/CSIYH1\* and CSIY/J/Ch/V/Am Cat. B Events.

Ref.	Panel	Function	FEI ID	Name	NF	Level	E-mail & Mobile
1	Ground Jury	Ground Jury President	10048837	Laubscher, Bruno	SUI	3	bruno@b-laubscher.ch
		Ground Jury Member	10075849	Reinas, Joao	POR	3	
		Ground Jury Member	10048878	Gonde, Didier	FRA	3	
		Ground Jury Member	10049554	Alvarez Nachon, Jose Antonio	ESP	3	
		Ground Jury Member	10048880	Gonzalez Alvarez, Daniel Balbino	ESP	3	
2	Foreign Technical Delegate	Foreign Technical Delegate	10052875	Elena Boix Gracia	ESP	3	
4	Course Designer	Course Designer	10024054	Bernardo Costa Cabral	POR	4	info@bernardocostacabral.com
		Assistant Course Designer	10051736	Balen, Leandro	BRA	3	
		Assistant Course Designer	10191638	Santos, Jose	POR	1	
		Assistant Course Designer		Graça, Maria Luis	ESP	NAT	
5	Chief Steward	Chief Steward	10052093	Horgan, Kate	IRL	3	katemhorgan@gmail.com
6	Foreign Steward	Foreign Steward	10093801	Griffin, Orla	IRL	3	
7	Assistants Stewards	Assistant Steward	10051037	Lopes Mateus, Antonio	POR	3	
		Assistant Steward	10049857	Ortega Polo, Eduardo	ESP	3	
		Assistant Steward	10050871	Machado, Luis	POR	3	
		Assistant Steward	10106030	Montefalco, Nuno	POR	3	
		Assistant Steward	10181182	Esteves, Ricardo	POR	2	
		Assistant Steward	10106033	Paixao, Pedro	POR	2	
		Assistant Steward	10063553	Caixinha, Armindo	POR	2	
		Assistant Steward	10082821	Rosado Cameron, Jesus	ESP	2	

**FEI APPROVED SCHEDULE**  
**Vilamoura (POR) 18-25 July 2021**



	FEI Veterinary Delegate	FEI Veterinary Delegate					
8	Veterinary Commission	Veterinary Commission President	10049973	Prazeres, Jose	POR	3	vetstoestevao@gmail.com
		Foreign Veterinary Delegate	10050074	Romero Guzman, José Manuel	ESP	2	jmr@josemanuelromero.es
		Assistant FEI Delegate	10051105	Barbosa, Mario	POR	3	
9	Veterinary Service Manager (VSM) (VR Art 1103) Treating Veterinarian (VR Art 1105)	Veterinary Service Manager	10160234	Cunha Rego, Rodrigo	POR		++351.966225328
		FEI Permitted Treating Veterinarian	10192583	Jordao Santos, Miguel Andre	POR		miguel.andre.santos@gmail.com ++351.966225328
10	Medical Doctor	Medical Doctor		Local Red Cross Service/Hospital de Loule			geral@hospitaldeloule.com ++351.28924950
11	Farrier	Farrier		Paz, Marcio			++351.914206195
12	NF Delegate	NF Delegate (if applicable)					

Please note that the schedule has been approved under the provision that all appointed Officials have successfully passed the on-line FEI Competency Evaluation Test.

## VI. INVITATIONS

### 1. GENERAL

Horses entered in one CSI star level may not enter another CSI star level at the same Event.

Horses may take part in national Competitions and international Competitions at the same Event only under the following conditions:

- Horses may take part in national Events up to two hours prior to the start of the international Event's Horse Inspection;
- If the national Event includes Competitions after the international Event ends, either on the same day or on the following day(s). Horses having taken part in the international Event may take part in national Competitions only, following the conclusion of the international Event.

Albania	Andorra	Armenia	Azerbaijan	Austria
Belarus	Belgium	Bosnia & Herzegovina	Bulgaria	Croatia
Cyprus	Czech Republic	Denmark	Estonia	Finland
France	Georgia	Germany	Great Britain	Greece
Hungary	Iceland	Ireland	Israel	Italy
Kosovo	Latvia	Liechtenstein	Lithuania	Luxembourg
North Macedonia	Malta	Moldova	Monaco	Montenegro
Netherlands	Norway	Poland	Portugal	Romania
Russia	San Marino	Serbia	Slovakia	Slovenia
Spain	Sweden	Switzerland	Turkey	Ukraine

Each NF is invited to enter 5 athletes in each Championship (Children, Juniors and Young Riders). The 5 athletes can start in the Individual Championship, 4 athletes may start in the Team Championship. The OC extends its invitation to one Chef d' Equipe per NF, who will be provided with similar privileges as the athletes. Each Athlete may ride only one horse; no reserve horse may be brought to the Championship. An NF that cannot send a team may send 1 or 2 individuals with one horse each.

One (1) groom per athlete.

### QUALIFICATIONS

Each NF is responsible to ensure that their athletes are of the appropriate age.

The **Children** Championship is open to athletes from the beginning of the calendar of the year in which they reach the age of 12 until the end of the calendar year in which they reach the age of 14.

The **Junior** Championship is open to athletes from the beginning of the calendar of the year in which they reach the age of 14 until the end of the calendar year in which they reach the age of 18.

The **Young Rider** Championship is open to athletes from the beginning of the calendar of the year in which they reach the age of 16 until the end of the calendar year in which they reach the age of 21.

Eligible requirements FEI Jumping Rules Annex IX art 6.1-6 and Annex XII art 6.

For all Championship the nominated entries must be done via the FEI Online System.

## FEI APPROVED SCHEDULE Vilamoura (POR) 18-25 July 2021

---

Following the completion of the nominated entries, NF's can generate the Certificate of Capacity per category directly in the FEI Online Entry System. Once the Certificate is generated it must be printed, signed by the President of the NF and submitted to the FEI Jumping Department ([marijn.dubbeldam@fei.org](mailto:marijn.dubbeldam@fei.org)) by June 21<sup>st</sup> 2021.

### **HORSES**

Horses must be 7 years of age or older for the **Junior** and **Young Rider** Championship.  
Horses must be 6 years of age or older for the **Children** Championship.

Horses competing in the **Junior** Championship cannot have competed in a Nations Cup or Grand Prix competition at a CSIO for Seniors in the current year (Annex IX, art. 15.1.1, 1.2 & 1.3).

Horses competing in the **Children** Championship cannot have competed in a Nations Cup or Grand Prix competition at a CSIO for Seniors in the current year and/or in the previous year (Annex XII, art. 21.1.2 & 1.3).

### **FEI JR's, Annex IX**

The Chefs d'Equipe are responsible for the behaviour of their teams and/or individuals throughout the Event. They and their NF are responsible for any damages that occur. If the Athletes are not lodged in private homes the Chefs d'Equipe must stay with their teams and/or individuals.

Athletes are invited by the Organiser through their National Federation.

One (1) groom per athlete.

Square for organiser/NF to include special provisions for restrictions related to Athlete/horse participation

## VII. ENTRIES

### IMPORTANT

- Entries must be made by NFs through the FEI Entry System for all categories of this Event (<https://invitation.fei.org/login>);
- Additional documentation can be found at: <https://inside.fei.org/fei/your-role/it-services/fei-entry-system/fei-entry-system-jumping>;
- All Athletes and Horses participating in any International Competition must be registered with the FEI;
- Athletes and/or Horses present at the Event without having been entered through the FEI's Online Entry System will be automatically disqualified unless compelling circumstances warrant otherwise.

In order to ease your arrival, it is the responsibility of the NF to supply the OC with all relevant information relating to their entries (date and time of arrival for every lorry, type of stall (shavings or empty), stallions, number and type of lorry, contact details of the Chef d'Equipe, veterinarian and riders, etc.

All Federations will receive a form to fill out and return after nominated entries.

Due to the large numbers of horses expected and a restricted parking area close to the stables, a number of two horses minimum per lorry is compulsory. Lorrys who don't use electricity will be parked on another parking lot.

No access to the stables before 17.07.2021 08h00

Entry Fees must be paid with the definite entries by bank transfer to the following account:

Account name: CLUBE HIPICO DE VILAMOURA  
IBAN: PT50 0045 7213 4026 9158 6757 8  
BIC: CCCMPTPL  
Bank Name: Caixa de Credito Agricola  
Bank address: Almancil

### 1. ENTRY DATES AND ENTRY FEES

Entries have to be in accordance with Art.251 of the FEI Jumping Rules, 26th edition, updates effective 1 January 2021

#### **Deadlines for Entries:**

Nominated Entries: **21.06.2021**  
(NB: Nominated Entries apply to Championships and Games **ONLY**)

Definite Entries: **28.06.2021**  
Last date for substitutions: **18.07.2021**

Until one hour before the horse inspection

In the event of an accident or illness of an Athlete and/or Horse, substantiated by a certificate from an official recognised doctor and/or veterinarian, between the date of definite entries and one hour before the first Horse Inspection of the Championship, substitutions of Athletes and/or Horses can be made. Such substitutions must be taken from the updated list of nominated entries and require Ground Jury approval.



**Entry fee per horse (per category):**

VAT excluded

CH-EU Young Riders	500€
CH-EU Juniors	500€
CH-EU Children	400€

VAT (in %) : **0**

Please refer to definition of Entry fees and Compulsory fees in the Glossary of the FEI Jumping Rules 26th edition, updates effective 1 January 2021, that is copied in Section XIV point 10.

**Compulsory fees per horse:**

- EADCMP Fee:
 

Included in entry fee <input type="checkbox"/>
Not included in entry fee <input checked="" type="checkbox"/>
- Lower Level Events (CIMs) CHF 18 per horse per event
- Higher Level Events CHF 25 per horse per event
- (For definition of CIMs see Appendix E of the FEI General Regulations, all other events not defined as CIMs)
- Fee for manure disposal (at OC discretion; maximum € 40 per horse per Event). 40€ per Event/ Per horse
- Fee for health/customs-related documents for Horses, if applicable (only if requested) 25€ per event/ Per horse

**All aforementioned amounts are including VAT**

**Total maximum fee per horse:** 65€/per event

**Compulsory fees per athlete:**

- NF fee if applicable n/a Per athlete
- NF medication control programme fee if applicable n/a Per athlete
- Fee for lorry parking if applicable n/a Per lorry/caravan
- Fee for electric hook-up for lorry 90€ Per lorry/caravan

**All aforementioned amounts are including VAT**

**Total maximum fee per Athlete:** 90€

**2. OTHER FEES**

All other fees must optional fees and be listed hereunder with the details of the amounts to be charged and approved by the FEI. Only fees approved by the FEI and listed in the approved Schedule can be charged by the OC. *Please specify if price per bale or other quantity.*

Hay:	11€/Bale
Straw:	7€/Bale
Shavings:	12€/Bale

Other (please specify):

- Extra Box : 180€
- Large box (if available and asked for with the Entries: 50€ excl. VAT
- Tack room: 250€
- Credit Card Fee: 3%

**All aforementioned amounts are including VAT**

VAT number of the organiser: PT513 256 890

### **3. NO-SHOWS/LATE WITHDRAWALS**

**NB:** In the case of withdrawals after the date of definite entries or no-shows the athlete or the respective NF will be held liable to reimburse the OC for the actual financial loss incurred by the OC (i.e. stabling and hotel expenses) as a result of the late withdrawal or no-show.

**Amount charged:** 250€

Via the NF of the rider/horse concerned: after the definite Entry Date a no show will be charged with 250€.

## VIII. TIMETABLE

**Competitions must not start before 08:00 and must not finish after 23:00, unless prior approval is granted by the FEI.**

**As per Jumping Rules Annex VI: combined competitions are not permitted.**

*The scheduling of competitions must take into account mandatory maintenance breaks as follows. In principle, there should be one maintenance break for every 40 starters; at a minimum, it is compulsory to include one maintenance break in competitions with 50-99 starters after half of the starters have competed. Competitions with 100 starters or more must have three maintenance breaks. The start list must indicate when the maintenance break will take place (e.g. after N° 25).*

(to be provided per category/level if multiple events)

	Day	Date	Time
• Opening of stables	Saturday	17/07/2021	08h00
• Horse Inspection <b>Children</b>	Sunday	18/07/2021	09h00
• Horse Inspection <b>Juniors</b>	"	"	11h00
• Horse Inspection <b>Young Riders</b>	"	"	15h00
• Horse Re-Inspection <b>Ch</b>	Monday	19/07/2021	08h00
• Horse Re-Inspection <b>J/YR</b>	"	"	08h30
• Chefs d'Equipes Meeting	Sunday	18/07/2021	16h30
• Chefs d'Equipes Meeting	Monday	19/07/2021	17h30
• Chefs d'Equipes Meeting	Tuesday	20/07/2021	17h30
• Second Horse inspection <b>Final J</b>	Friday	23/07/2021	14h00
• Second Horse inspection <b>Final Ch</b>	Sunday	25/07/2021	09h30
• Second Horse inspection <b>Final Y</b>	"	"	10h00

### Competitions CH-EU Children:

	Day	Date	Time	Art	Prize Money
• Declaration of Starters	Every day before 19h00			///////	///////
• WARM UP <b>Children</b>	Monday	19/07/2021	15h00		
• C1 1 <sup>st</sup> Competition <b>Children</b> (Teams and Individuals)	Wednesday	21/07/2021	08h30	238.2.1	In Kind
• C2a 2 <sup>nd</sup> Competition <b>Children</b> (Team, Second Individual)	Friday	23/07/2021	13h30	Annex XII art.22.3 First round	In Kind
• C2b 2 <sup>nd</sup> Competition <b>Children</b> (Team, Second Individual)	Saturday	24/07/2021	08h30	Annex XII art.22.3 Second round	In Kind
• Medal Ceremony Teams <b>Children</b>	Saturday	24/07/2021	Following		
• C3 Farewell Competition <b>Children</b>	Sunday	25/07/2021	08h30	Annex XII art.22.4	In Kind
• C4 Individual Final <b>Children</b>	Sunday	25/07/2021	14h00	Annex XII art. 22.4	In Kind
• Medal Ceremony Individual <b>Children</b>	Sunday	25/07/2025	Following		In Kind
• Prizes in Kind	10.000€ Prizes in kind must be easily convertible into cash (GRs Art. 127).				

Competitions CH-EU Juniors:	Day	Date	Time	Art	Prize Money
• Declaration of Starters	Every day before 19h00			///////	////////// ////
• WARM UP Juniors	Monday	19/07/2021	09h00		
• C5 1 <sup>st</sup> Competition Juniors (Teams and Individuals)	Tuesday	20/07/2021	08h30	239 & 263	1.000€
• C6a 2 <sup>nd</sup> Competition Juniors (Team, Second Individual)	Wednesday	21/07/2021	13h30	Annex IX art.16.4 First Round	
• C6b 2 <sup>nd</sup> Competition Juniors (Team, Second Individual)	Thursday	22/07/2021	08h30	Annex IX art.16.4 Second Round	4.000€ for the Teams 2.000€ for the Individuals
• Medal Ceremony Teams Juniors	Thursday	22/07/2021	Following		
• C7 Individual Final Juniors	Saturday	24/07/2021	14h00	Annex IX art.16.6	4.000€
• C8 Farewell Juniors	Saturday	24/07/2021	17h00	238.2.1	1.000€
• Medal Ceremony Individual Juniors	Saturday	24/07/2021	Following		
• Total Prize Money	12.000€ <i>Prizes in kind must be easily convertible into cash (GRs Art. 127).</i>				

Competitions CH-EU Young Riders:	Day	Date	Time	Art	Prize Money
• Declaration of Starters	Every day before 19h00			///////	////////// ////
• WARM UP Young Riders	Monday	19/07/2021	11h30		
• C9 1 <sup>st</sup> Competition Young Riders (Teams and Individuals)	Tuesday	20/07/2021	13h30	239 & 263	1.500€
• C10a 2 <sup>nd</sup> Competition Young Riders (Team Final, Second Individual)	Thursday	22/07/2021	13h30	Annex IX art.16.4 First Round	
• C10b 2 <sup>nd</sup> Competition Young Riders (Team Final, Second Individual)	Friday	23/07/2021	08h30	Annex IX art.16.4 Second Round	8.000€ for the Teams 3.500€ for the Individuals
• Medal Ceremony Teams Young Riders	Friday	23/07/2021	Following		
• C11 Farewell Young Riders	Sunday	25/07/2021	11h00	238.2.1	2.500€
• C12 Individual Final Young Riders	Sunday	25/07/2021	17h30	Annex IX art.16.6	8.000€
• Medal Ceremony Individual Young Riders	Sunday	25/07/2021	Following		
• Total Prize Money	23.500€ <i>Prizes in kind must be easily convertible into cash (GRs Art. 127).</i>				

**Overall Prize Money: 45.500€ (10.000€ in Kind)**

**Applicable government tax to be deducted from Prize Money (see also XIV.8): 25%**

**GENERAL CLASSIFICATION AT THE END OF THE COMPETITIONS:**

Leading athlete award –	(Prize description and value)
Best foreign athlete -	(Prize description and value)
Best home athlete –	(Prize description and value)
Team awards –	(Prize description and value)

**PRIZE – CLASSIFICATION:**

**IX. COMPETITION DETAIL**

**FIRST DAY :** Monday

**DATE (dd/mm/yy) :** 19/07/2021

**WARM UP JUNIORS**

**Time:** 09h00

Speed/Fixed time n/a  
Height of obstacles: max 1m30  
Number of horses per athlete 1  
Starting order: by Nation  
Time: 90 seconds per athlete

\* \* \* \* \*

**WARM UP YOUNG RIDERS**

**Time:** 11h30

Speed/Fixed time n/a  
Height of obstacles: max 1m40  
Number of horses per athlete 1  
Starting order: by Nation  
Time: 90 seconds per athlete

\* \* \* \* \*

**WARM UP CHILDREN**

**Time:** 15h00

Speed/Fixed time n/a  
Height of obstacles: max 1m20  
Number of horses per athlete 1  
Starting order: by Nation  
Time: 90 seconds per athlete

\* \* \* \* \*

**SECOND DAY : Tuesday**

**DATE (dd/mm/yy) : 20/07/2021**

**COMPETITION No:** C-5

**Time:** 08h30

Type of Competition: Table C Speed & Handiness Acc. to Article: 239 & 263 and Annex IX art. 16.3.2 & 17.1

Competition description: **JUNIORS 1<sup>st</sup> Competition (Teams and Individuals)**

Jump-off (if any)	-
Speed/Fixed time	-
Height of obstacles:	1,40m
Number of horses per athlete	1
Number of Starters:	100* (if more than 100 take part then please refer to Section XIV point 9)
Total prize money:	1.000€
Chart to be used:	1 (25% to winner) <input checked="" type="checkbox"/>
	2 (33% to winner) <input type="checkbox"/>

Please specify prize money amount for each athlete placed 13<sup>th</sup> and beyond: 15€

Starting order: There will be a draw for the starting order of the Athletes, regardless of their nationality.

The Chefs d'Equipe must declare their Teams to the OC by filling in the Teams Form before 17h00 on the day preceding the Second Competition. The fifth Athlete/Horse may take part in the second Competition as an individual and in the third Competition (Individual Final), if qualified.

The substitution of a team member by the fifth Athlete/Horse is only allowed in case of an accident or illness either of one of the four team Athletes or of one of the four Horses, provided the Chef d'Equipe obtains the approval of the Ground Jury. Such substitution may be made up to one hour before the start of the first round of the Team Final.

This competition is run over a Table A course judged under Table C (JR art. 239 & 263) without a Jump-off in the event of equality for the first place.

The Score obtained by each Athlete in the first Competition will be converted into Penalties according to the following method. Each Athlete's time will be multiplied by the coefficient 0.50 and converted into points; the points must be rounded to two decimal places. The second decimal place will be rounded up from .005 and rounded down from .004. The Athlete with the lowest number of points after this conversion will be given zero penalties, the other Athletes being credited with the number of Penalties representing the difference in points between each of them and the leading Athlete.

If an Athlete is eliminated or retires, he/she will be penalised with 20 Penalties more than the Athlete who has been the most severely penalised after the times of all Athletes who completed the Competition have been converted into Penalties.

\* \* \* \* \*

**COMPETITION No:** C-9

**Time:** 13h30

Type of Competition: Table C Speed & Handiness Acc. to Article: 239 & 263 and Annex IX art.16.3.2 & 17.1

Competition description: **YOUNG RIDERS 1<sup>st</sup> Competition (Teams and Individuals)**

Jump-off (if any) -  
Speed/Fixed time -  
Height of obstacles: 1,45m  
Number of horses per athlete 1  
Number of Starters: 100\* (if more than 100 take part then please refer to Section XIV point 9)  
Total prize money: 1.500€  
Chart to be used: 1 (25% to winner)   
2 (33% to winner)

Please specify prize money amount for each athlete placed 13<sup>th</sup> and beyond: 15€

Starting order: There will be a draw for the starting order of the Athletes, regardless of their nationality.

The Chefs d'Equipe must declare their Teams to the OC by filling in the Teams Form before 17h00 on the day preceding the Second Competition. The fifth Athlete/Horse may take part in the second Competition as an individual and in the third Competition (Individual Final), if qualified.

The substitution of a team member by the fifth Athlete/Horse is only allowed in case of an accident or illness either of one of the four team Athletes or of one of the four Horses, provided the Chef d'Equipe obtains the approval of the Ground Jury. Such substitution may be made up to one hour before the start of the first round of the Team Final.

This competition is run over a Table A course judged under Table C (JR art. 239 & 263) without a Jump-off in the event of equality for the first place.

The Score obtained by each Athlete in the first Competition will be converted into Penalties according to the following method. Each Athlete's time will be multiplied by the coefficient 0.50 and converted into points; the points must be rounded to two decimal places. The second decimal place will be rounded up from .005 and rounded down from .004. The Athlete with the lowest number of points after this conversion will be given zero penalties, the other Athletes being credited with the number of Penalties representing the difference in points between each of them and the leading Athlete.

If an Athlete is eliminated or retires, he/she will be penalised with 20 Penalties more than the Athlete who has been the most severely penalised after the times of all Athletes who completed the Competition have been converted into Penalties.

\* \* \* \* \*



THIRD DAY : Wednesday

DATE (dd/mm/yy) : 21/07/2021

**COMPETITION No:** C-1

**Time:** 08h30

Type of Competition: Table A against the clock Acc. to Article: 238.2.1 and Annex XII art. 19.2.2, 22.2 & 23.1

Competition description: **CHILDREN 1<sup>st</sup> Competition (Teams and Individuals)**

Jump-off (if any) -  
Speed/Fixed time 350m/min  
Height of obstacles: 1,25m  
Number of horses per athlete 1  
Total prize money: Prize in Kind  
Chart to be used: 1 (25% to winner)   
2 (33% to winner)

Starting order according to a draw (art.252)

The Chefs d'Equipe must declare their teams to the OC by filling in the Teams Form before 17h00 on the day preceding the Second Competition. The fifth Athlete/Horse may take part in the second Competition as an individual and in the third Competition (Individual Final), if qualified.

The substitution of a team member by the fifth Athlete/Horse is only allowed in case of an accident or illness either of one of the four team Athletes or of one of the four Horses, provided the Chef d'Equipe obtains the approval of the Ground Jury. Such substitution may be made up to one hour before the start of the first round of the Team Final.

\* \* \* \* \*

**COMPETITION No:** C-6a

**Time:** 13h30

Type of Competition: Two rounds, first round Acc. to Article: 273.3.2 and Annex IX art.16.4, 16.4.1, 16.4.2, 17.2, 17.4 & 18

Competition description: **JUNIORS 2<sup>nd</sup> Competition (Team Final first round, Second Individual)**

Jump-off (if any) -  
Speed/Fixed time 375 m/min  
Height of obstacles: 1,40m  
Number of horses per athlete 1  
Number of Starters: 100\* (if more than 100 take part then please refer to Section XIV point 9)  
Total prize money: -  
Chart to be used: 1 (25% to winner)   
2 (33% to winner)

Please specify prize money amount for each athlete placed 13<sup>th</sup> and beyond: -

This competition is run over two rounds, identical or different, with the same degree of difficulty in the second round according to Table A not against the clock with a jump-off against the clock in case of equality for the first, second and/or third place in the overall classification for the Team Championship.

This competition to be open only to Athletes and Horses which have taken part in the first Competition C-5, the Team classification only affecting the members of the Teams who have declared to start.

Starting order: according to the draw in the first round.

In the second round the order of starting will be according to the reverse order of total Penalties incurred by the best three Athletes from among the five of each nation in the first Competition and the best three Athletes per team in the first round.

In the second round individual Athletes will start before the teams. In the case of individuals or teams with equal penalties, the same starting order will be retained as in first round.

The second round is open only to the ten best teams based on the total Penalties incurred by the best three Athletes of each nation in the first Competition and the best three Athletes per team in the first round and those teams placed equal for 10<sup>th</sup> place.

Before the ten best teams and those placed equal for 10<sup>th</sup> place begin their second round, all individuals and team members not qualified for the second round may take part in a second round qualifier for the third Competition. There must be a break of a least 30 minutes between the second round qualifier and the second round of the Team Final.

The substitution of a Team member by the Athlete/Horse is only allowed in case of an accident or illness either of one of the four Team Athletes or of one of the four Horses, provided the Chef d'Equipe obtains the approval of the Ground Jury. Such substitution may be made up to one hour before the start of the first round of the Team Final.

\* \* \* \* \*

FOURTH DAY : Thursday

DATE (dd/mm/yy) : 22/07/2021

**COMPETITION No:** C-6b

**Time:** 08h30

Type of Competition: Two rounds, second round Acc. to Article: 273.3.2 and Annex IX art.16.4, 16.4.1, 16.4.2, 17.2, 17.4 & 18

Competition description: **JUNIORS 2<sup>nd</sup> Competition (Team Final, Second Individual)**

Jump-off (if any) only for the medals  
Speed/Fixed time 375 m/min  
Height of obstacles: 1,40m  
Number of horses per athlete 1  
Number of Starters: 100\* (if more than 100 take part then please refer to Section XIV point 9)  
Total prize money: 4.000€ for the Teams and 2.000€ for the individual placings in this competition  
Chart to be used: 1 (25% to winner)   
2 (33% to winner)   
Please specify prize money amount for each athlete placed 13<sup>th</sup> and beyond: 50€ for individual placings

This competition is run over two rounds, identical or different, with the same degree of difficulty in the second round according to Table A not against the clock with a jump-off against the clock in case of equality for the first, second and/or third place in the overall classification for the Team Championship.

This competition to be open only to Athletes and Horses which have taken part in the first Competition C-5, the Team classification only affecting the members of the Teams who have declared to start.

Starting order: according to the draw in the first round.

In the second round the order of starting will be according to the reverse order of total Penalties incurred by the best three Athletes from among the five of each nation in the first Competition and the best three Athletes per team in the first round.

In the second round individual Athletes will start before the teams. In the case of individuals or teams with equal penalties, the same starting order will be retained as in first round.

The second round is open only to the ten best teams based on the total Penalties incurred by the best three Athletes of each nation in the first Competition and the best three Athletes per team in the first round and those teams placed equal for 10<sup>th</sup> place.

Before the ten best teams and those placed equal for 10<sup>th</sup> place begin their second round, all individuals and team members not qualified for the second round may take part in a second round qualifier for the third Competition. There must be a break of a least 30 minutes between the second round qualifier and the second round of the Team Final.

The substitution of a Team member by the Athlete/Horse is only allowed in case of an accident or illness either of one of the four Team Athletes or of one of the four Horses, provided the Chef d'Equipe obtains the approval of the Ground Jury. Such substitution may be made up to one hour before the start of the first round of the Team Final.

\* \* \* \* \*

**COMPETITION No:** C-10a

**Time:** 13h30

Type of Competition: Two rounds, first round Acc. to Article: 273.3.2 and Annex IX  
art.16.4, 16.4.1, 16.4.2, 17.2, 17.4 & 18

Competition description: **YOUNG RIDERS 2<sup>nd</sup> Competition (Team Final first round, Second Individual)**

Jump-off (if any)	-
Speed/Fixed time	100 m/min
Height of obstacles:	1,50m
Number of horses per athlete	1
Number of Starters:	100* (if more than 100 take part then please refer to Section XIV point 9)
Total prize money:	-
Chart to be used:	1 (25% to winner) <input checked="" type="checkbox"/> 2 (33% to winner) <input type="checkbox"/>

Please specify prize money amount for each athlete placed 13<sup>th</sup> and beyond: -

This competition is run over two rounds, identical or different, with the same degree of difficulty in the second round according to Table A not against the clock with a jump-off against the clock in case of equality for the first, second and/or third place in the overall classification for the Team Championship.

This competition to be open only to Athletes and Horses which have taken part in the first Competition C-9, the Team classification only affecting the members of the Teams who have declared to start.

Starting order: according to the draw in the first round.

In the second round the order of starting will be according to the reverse order of total Penalties incurred by the best three Athletes from among the five of each nation in the first Competition and the best three Athletes per team in the first round.

In the second round individual Athletes will start before the teams. In the case of individuals or teams with equal penalties, the same starting order will be retained as in first round.

The second round is open only to the ten best teams based on the total Penalties incurred by the best three Athletes of each nation in the first Competition and the best three Athletes per team in the first round and those teams placed equal for 10<sup>th</sup> place.

Before the ten best teams and those placed equal for 10<sup>th</sup> place begin their second round, all individuals and team members not qualified for the second round may take part in a second round qualifier for the third Competition. There must be a break of a least 30 minutes between the second round qualifier and the second round of the Team Final.

The substitution of a Team member by the Athlete/Horse is only allowed in case of an accident or illness either of one of the four Team Athletes or of one of the four Horses, provided the Chef d'Equipe obtains the approval of the Ground Jury. Such substitution may be made up to one hour before the start of the first round of the Team Final.

**FIFTH DAY : Friday**

**DATE (dd/mm/yy) : 23/07/2021**

**COMPETITION No:** C-10b

**Time:** 08h30

Type of Competition: Two rounds, second round Acc. to Article: 273.3.2 and Annex IX art.16.4, 16.4.1, 16.4.2, 17.2, 17.4 & 18

Competition description: **YOUNG RIDERS 2<sup>nd</sup> Competition (Team Final, Second Individual)**

Jump-off (if any) only for the medals  
Speed/Fixed time **100** m/min  
Height of obstacles: 1,50m  
Number of horses per athlete 1  
Number of Starters: 100\* (if more than 100 take part then please refer to Section XIV point 9)  
Total prize money: 8.000€ for the Teams and 3.500€ for the individual placings in the competition  
Chart to be used: 1 (25% to winner)   
2 (33% to winner)   
Please specify prize money amount for each athlete placed 13<sup>th</sup> and beyond: 40€ for individual placings

This competition is run over two rounds, identical or different, with the same degree of difficulty in the second round according to Table A not against the clock with a jump-off against the clock in case of equality for the first, second and/or third place in the overall classification for the Team Championship.

This competition to be open only to Athletes and Horses which have taken part in the first Competition C-9, the Team classification only affecting the members of the Teams who have declared to start.

Starting order: according to the draw in the first round.

In the second round the order of starting will be according to the reverse order of total Penalties incurred by the best three Athletes from among the five of each nation in the first Competition and the best three Athletes per team in the first round.

In the second round individual Athletes will start before the teams. In the case of individuals or teams with equal penalties, the same starting order will be retained as in first round.

The second round is open only to the ten best teams based on the total Penalties incurred by the best three Athletes of each nation in the first Competition and the best three Athletes per team in the first round and those teams placed equal for 10<sup>th</sup> place.

Before the ten best teams and those placed equal for 10<sup>th</sup> place begin their second round, all individuals and team members not qualified for the second round may take part in a second round qualifier for the third Competition. There must be a break of a least 30 minutes between the second round qualifier and the second round of the Team Final.

The substitution of a Team member by the Athlete/Horse is only allowed in case of an accident or illness either of one of the four Team Athletes or of one of the four Horses, provided the Chef d'Equipe obtains the approval of the Ground Jury. Such substitution may be made up to one hour before the start of the first round of the Team Final.

\* \* \* \* \*

**COMPETITION No:** C-2a

**Time:** 13h30

Type of Competition: Two rounds, first round Acc. to Article: 273.3.2 and Annex XII art.19.2.2, 22.3, 23.2 and 24

Competition description: **CHILDREN 2<sup>nd</sup> Competition (Team Final first round, Second Individual)**

Jump-off (if any) -  
Speed/Fixed time 350 m/min  
Height of obstacles: 1,30m  
Number of horses per athlete 1  
Number of Starters: 100\* (if more than 100 take part then please refer to Section XIV point 9)  
Total prize money: -  
Chart to be used: 1 (25% to winner)   
2 (33% to winner)

Please specify prize money amount for each athlete placed 13<sup>th</sup> and beyond: -

This competition is run over two rounds, identical or different, with the same degree of difficulty in the second round according to Table A not against the clock with a jump-off against the clock in case of equality for the first, second and/or third place in the overall classification for the Team Championship.

This competition is open only to Athletes and Horses which have taken part in the first Competition C-1, the Team classification only affects the members of the Teams who have declared to start.

Starting order: in the first round of the second Competition will be according to the draw, conducted according to JRs Art.252. In the second round, the order of starting will be according to the reverse order of total Penalties incurred by the best three Athletes from among the five of each nation in the first Competition and the best three Athletes per Team in the first round of the Team Final.

In the second round individual Athletes will start before the Teams. In case of individuals or teams with equal Penalties, the same starting order as in the first round will be used.

The second round is open only to the ten best teams based on the total Penalties incurred by the best three Athletes of each nation in the first Competition and the best three Athletes per team in the first round and those teams placed equal for 10<sup>th</sup> place.

Before the ten best teams and those placed equal for 10<sup>th</sup> place begin their second round, all individuals and team members not qualified for the second round may take part in a second round qualifier for the third Competition. There must be a break of a least 30 minutes between the second round qualifier and the second round of the Team Final.

The substitution of a Team member by the Athlete/Horse is only allowed in case of an accident or illness either of one of the four Team Athletes or of one of the four Horses, provided the Chef d'Equipe obtains the approval of the Ground Jury. Such substitution may be made up to one hour before the start of the first round of the Team Final.

\* \* \* \* \*

**SIXTH DAY : Saturday**

**DATE (dd/mm/yy) : 24/07/2021**

**COMPETITION No:** C-2b

**Time:** 08h30

Type of Competition: Two rounds, second round Acc. to Article: 273.3.2 and Annex XII art.19.2.2, 22.3, 23.2 and 24

Competition description: **CHILDREN 2<sup>nd</sup> Competition (Team Final, Second Individual)**

Jump-off (if any)	only for the medals
Speed/Fixed time	350 m/min
Height of obstacles:	1,30m
Number of horses per athlete	1
Number of Starters:	100* (if more than 100 take part then please refer to
Section XIV point 9)	
Total prize money:	In Kind
Chart to be used:	1 (25% to winner) <input checked="" type="checkbox"/>
	2 (33% to winner) <input type="checkbox"/>

Please specify prize money amount for each athlete placed 13<sup>th</sup> and beyond: -

This competition is run over two rounds, identical or different, with the same degree of difficulty in the second round according to Table A not against the clock with a jump-off against the clock in case of equality for the first, second and/or third place in the overall classification for the Team Championship.

This competition is open only to Athletes and Horses which have taken part in the first Competition C-1, the Team classification only affecting the members of the Teams who have declared to start.

Starting order: in the first round of the second Competition will be according to the draw, conducted according to JRs Art.252. In the second round, the order of starting will be according to the reserve order of total Penalties incurred by the best three Athletes from among the five of each nation in the first Competition and the best three Athletes per Team in the first round of the Team Final.

In the second round individual Athletes will start before the Teams. In case of individuals or teams with equal Penalties, the same starting order as in the first round will be used.

The second round is open only to the ten best teams based on the total Penalties incurred by the best three Athletes of each nation in the first Competition and the best three Athletes per team in the first round and those teams placed equal for 10<sup>th</sup> place.

Before the ten best teams and those placed equal for 10<sup>th</sup> place begin their second round, all individuals and team members not qualified for the second round may take part in a second round qualifier for the third Competition. There must be a break of a least 30 minutes between the second round qualifier and the second round of the Team Final.

The substitution of a Team member by the Athlete/Horse is only allowed in case of an accident or illness either of one of the four Team Athletes or of one of the four Horses, provided the Chef d'Equipe obtains the approval of the Ground Jury. Such substitution may be made up to one hour before the start of the first round of the Team Final.

\* \* \* \* \*

**COMPETITION No:** C-7

**Time:** 14h00

Type of Competition: Two rounds  
& 19

Acc. to Article: Annex IX art.16.6, 17.3, 17.4

Competition description: **JUNIORS Individual Final**

Jump-off (if any)	only for the medals
Speed/Fixed time	375 m/min
Height of obstacles:	1,40m
Number of horses per athlete	1
Number of Starters:	100* (if more than 100 take part then please refer to
Section XIV point 9)	
Total prize money:	4.000€
Chart to be used:	1 (25% to winner) <input checked="" type="checkbox"/>
	2 (33% to winner) <input type="checkbox"/>

Please specify prize money amount for each athlete placed 13<sup>th</sup> and beyond: 50€

This Competition consist of two different rounds A and B, each judged under Table A not against the clock without a jump-off. In case of equality of Penalties for the first, second and/or third place in the overall classification of the Individual Championship, there will be a jump-off against the clock.

Qualified to participate are the top 60% of Athletes (including those placed equal for the last qualifying place) according to the cumulative Penalties over the first and second qualifying Competitions. The number of Athletes permitted to participate must not be less than 15 and not more than 30.

They must have taken part in the first qualifying Competition (completed or not) and have completed the second Competition (without having been eliminated or without retiring). If for any reason one or more of the qualified Athletes are unable to start, they will not be replaced by followers.

All Athletes who complete Round A go forward to Round B. The penalties in two rounds are added.

The Athletes will be invited to inspect the course of Round B.

The starting order for Round A will follow the reverse order of Penalties incurred in the first and second qualifying Competitions of the Championship. In the event of equality of Penalties for any placing, the result of the first qualifying Competition will be the deciding factor for the starting order of the Athletes. The lowest placed Athlete qualified will therefore start as number one.

The starting order for round B will follow the reverse order of Penalties incurred in the first and second qualifying Competitions as well as round A. The Athlete with the greatest number of Penalties will start first, the Athlete with the least Penalties will start last. In the event of Athletes with equal Penalties, the result of the first qualifying Competition will be deciding factor for the starting order.

Horses must have passed the Second Inspection.

The individual placing is determined for each Athlete by addition of Penalties incurred in the first Competition, the two rounds of the second Competition (disregarding the Penalties incurred in a possible jump-off) and the two rounds of the third Competition.

In case of equality of Penalties for the first, second and/or third place, a jump-off against the clock is compulsory. See Art. 17.4 of Annex IX).

If two jump-offs are required, the jump-off for the third place shall precede the jump-off for the second and first place.

Two classifications for the Individual Final Competition must be provided: one for the Individual



Medal winners and another for all Athletes taking part in this Competition. For the latter classification only the results from Round A and B count. Athletes with equality of points are placed equal.

\* \* \* \* \*

**COMPETITION No:** C-8

**Time:** 17h00

Type of Competition: Against the clock Acc. to Article: 238.2.1 Annex IX, art.16.5 & 17.5)

Competition description: **FAREWELL COMPETITION JUNIORS**

Jump-off (if any)	No
Speed/Fixed time	350 m/min
Height of obstacles:	1,30m
Number of horses per athlete	1
Number of Starters:	100* (if more than 100 take part then please refer to
Section XIV point 9)	
Total prize money:	1.000€
Chart to be used:	1 (25% to winner) <input checked="" type="checkbox"/>
	2 (33% to winner) <input type="checkbox"/>

Please specify prize money amount for each athlete placed 13<sup>th</sup> and beyond: 15€

Starting order: according to a draw regardless of nationality  
Open to athletes who are not qualified to participate in the Individual Final

\* \* \* \* \*

SEVENTH DAY : Sunday

DATE (dd/mm/yy) : 25/07/2021

**COMPETITION No:** C-3

**Time:** 08h30

Type of Competition: Against the clock Acc. to Article: 238.2.1 Annex XII, art. 22.4.1

Competition description: **FAREWELL COMPETITION CHILDREN**

Jump-off (if any) No  
Speed/Fixed time 350 m/min  
Height of obstacles: 1,20m  
Number of horses per athlete 1  
Number of Starters: 100\* (if more than 100 take part then please refer to Section XIV point 9)  
Total prize money: Prize in Kind  
Chart to be used: 1 (25% to winner)   
2 (33% to winner)

Please specify prize money amount for each athlete placed 13<sup>th</sup> and beyond: €\_\_\_

Starting order: according to a draw regardless of nationality  
Open to athletes who are not qualified to participate in the Individual Final

\* \* \* \* \*

**COMPETITION No:** C-11

**Time:** 11h00

Type of Competition: Against the clock Acc. to Article: 238.2.1 Annex IX, art.16.5 & 17.5)

Competition description: **FAREWELL COMPETITION YOUNG RIDERS**

Jump-off (if any) No  
Speed/Fixed time 350 m/min  
Height of obstacles: 1,40m  
Number of horses per athlete 1  
Number of Starters: 100\* (if more than 100 take part then please refer to Section XIV point 9)  
Total prize money: 2.500€  
Chart to be used: 1 (25% to winner)   
2 (33% to winner)

Please specify prize money amount for each athlete placed 13<sup>th</sup> and beyond: 25€

Starting order: according to a draw regardless of nationality  
Open to athletes who are not qualified to participate in the Individual Final

\* \* \* \* \*

**COMPETITION No:** C-4

**Time:** 14h00

Type of Competition: Two rounds

Acc. to Article: Annex XII art.22.4.2 & 23.3

Competition description: **CHILDREN Individual Final**

Jump-off (if any)	only for the medals
Speed/Fixed time	350 m/min
Height of obstacles:	1,30m
Number of horses per athlete	1
Number of Starters:	100* (if more than 100 take part then please refer to Section XIV point 9)
Total prize money:	Prize in Kind
Chart to be used:	1 (25% to winner) <input checked="" type="checkbox"/>
	2 (33% to winner) <input type="checkbox"/>

Please specify prize money amount for each athlete placed 13<sup>th</sup> and beyond: €\_\_

This Competition consist of two different rounds A and B, each judged under Table A not against the clock, with a speed of 350m/min.

Qualified to participate are the top 60% of Athletes (including those placed equal for the last qualifying place) according to the cumulative Penalties over the first and second qualifying Competitions. The number of Athletes permitted to participate must not be less than 15 and not more than 30. However, all Athletes with equal Penalties for the last qualification place are allowed to participate in the Individual Final even if the number of starters would then be more than 30.

Athletes must have taken part in the first Competition completed or not) and have completed the second Competition (without having been eliminated or without retiring). If an Athlete is eliminated or retires from the First Competition he/she shall be penalised with 20 Penalties more than the Athlete with the highest number of Penalties. If the Athlete concerned has himself received the highest number of Penalties before being eliminated or retiring, 20 penalties will be added to his Score. If for any reason one or more of the qualified Athletes are unable to start, they will not be replaced.

All Athletes who complete Round A go forward to Round B. The penalties in two rounds are added.

Athletes will be invited to inspect the course of round B.

The starting order for Round A will follow the reverse Penalties incurred in the first and second qualifying Competitions of the Championship. In the event of equality of Penalties for any placing, the result of the first qualifying Competition will be the deciding factor for the starting order of the Athletes. The lowest placed Athlete qualified will therefore start as number one.

The starting order for round B will follow the reverse order of Penalties incurred in the first and second qualifying Competitions as well as round A. The Athlete with the greatest number of Penalties will start first, the Athlete with the least Penalties will start last. In the event of Athletes with equal Penalties, the result of the first qualifying Competition will be deciding factor for the starting order.

Horses must have passed the Second Inspection.

\* \* \* \* \*

**COMPETITION No:** C-12

**Time:** 17h30

Type of Competition: Two rounds Acc. to Article: Annex IX art.16.6, 17.3, 17.4 & 19

Competition description: **YOUNG RIDERS Individual Final**

Jump-off (if any)	only for the medals
Speed/Fixed time	400 m/min
Height of obstacles:	1,50m
Number of horses per athlete	1
Number of Starters:	100* (if more than 100 take part then please refer to
Section XIV point 9)	
Total prize money:	8.000€
Chart to be used:	1 (25% to winner) <input checked="" type="checkbox"/>
	2 (33% to winner) <input type="checkbox"/>

Please specify prize money amount for each athlete placed 13<sup>th</sup> and beyond: n/a

This Competition consist of two different rounds A and B, each judged under Table A not against the clock without a jump-off. In case of equality of Penalties for the first, second and/or third place in the overall classification of the Individual Championship, there will be a jump-off against the clock.

Qualified to participate are the top 60% of Athletes (including those placed equal for the last qualifying place) according to the cumulative Penalties over the first and second qualifying Competitions. The number of Athletes permitted to participate must not be less than 15 and not more than 30.

They must have taken part in the first qualifying Competition (completed or not) and have completed the second Competition (without having been eliminated or without retiring). If for any reason one or more of the qualified Athletes are unable to start, they will not be replaced by followers.

All Athletes who complete Round A go forward to Round B. The penalties in two rounds are added.

The Athletes will be invited to inspect the course of Round B.

The starting order for Round A will follow the reverse order of Penalties incurred in the first and second qualifying Competitions of the Championship. In the event of equality of Penalties for any placing, the result of the first qualifying Competition will be the deciding factor for the starting order of the Athletes. The lowest placed Athlete qualified will therefore start as number one.

The starting order for round B will follow the reverse order of Penalties incurred in the first and second qualifying Competitions as well as round A. The Athlete with the greatest number of Penalties will start first, the Athlete with the least Penalties will start last. In the event of Athletes with equal Penalties, the result of the first qualifying Competition will be deciding factor for the starting order.

Horses must have passed the Second Inspection.

The individual placing is determined for each Athlete by addition of Penalties incurred in the first Competition, the two rounds of the second Competition (disregarding the Penalties incurred in a possible jump-off) and the two rounds of the third Competition.

In case of equality of Penalties for the first, second and/or third place, a jump-off against the clock is compulsory. See Art. 17.4 of Annex IX).

If two jump-offs are required, the jump-off for the third place shall precede the jump-off for the second and first place.

Two classifications for the Individual Final Competition must be provided: one for the Individual Medal winners and another for all Athletes taking part in this Competition. For the latter classification only the results from Round A and B count. Athletes with equality of points are placed equal.

## X. FACILITIES OFFERED

### 1. ATHLETES

#### Accommodation

Hotel: Please check the website [www.vilamouraequestriancentre.com](http://www.vilamouraequestriancentre.com), to find a list of nearby accommodations

Address:

Telephone:

At the expense of: The Organiser  or Athletes

Accommodated (bed and breakfast) from \_\_\_\_\_ to \_\_\_\_\_

#### Meals

At the expense of: The Organiser  or Athletes

Meals provided from 19/07/2021 to 25/07/2021 .

The OC will provide lunch free of charge to all athletes and Chefs d'Equipe as follows:

Children: from 19/07/2021 - 25/07/2021

Juniors: from 19/07/2021 - 24/07/2021

Young Riders: 19/07/2021 - 25/07/2021

### 2. GROOMS

#### Accommodation.

Requests for accommodation must be sent with entries.

At the expense of: The Organiser  or Athletes

Accommodated (bed and breakfast) from \_\_\_\_\_ to \_\_\_\_\_

#### Meals.

At the expense of: The Organiser  or Athletes

Meals provided from \_\_\_\_\_ to \_\_\_\_\_

Grooms and other, if not staying in the lorry, must arrange their own accommodation reservation. For those staying at the event, The OC will provide sufficient clean sanitary and shower facilities, with hot and cold water, for male and female grooms.

**NB: If applicable, Organiser must provide proper sanitary conditions. The showering facilities should be sufficient for both male and female grooms with hot and cold water. Shower facilities as well as restrooms should at all times be in a state of cleanliness.**

## XI. LOGISTICAL/ADMINISTRATIVE/TECHNICAL INFORMATION

### 1. DRAW

List of Draws, time, date and location: All draws take place at the Chefs d'Equipe meetings

### 2. COMPETITION ARENA(S)

Dimensions: "Francisco Moura Arena" 100 x 80m  
Type of Footing: Sand (Otto Sport)

### 3. PRACTICE ARENA(S)

Dimensions: "Kunwald de Calvarie Arena" 80 x 60m  
Type of Footing: Sand (Otto Sport)

Training (including working, lunging and walking) of horses only is allowed at specified times in official and controlled exercise areas, provided by the OC from Sunday July 19<sup>th</sup> 2021 (immediately after de Horse Inspection) until the end of the event. The exercise/practice areas will be permanently controlled by FEI stewards.

During a competition the exercise/practice arena strictly is reserved for horses taking part in the actual competition and the next three Athletes must be mounted and ready to enter the arena.

IF AN ATHLETE IS NOT READY WHEN HIS/HER STARTING NUMBER/NAME IS CALLED, HE/SHE WILL LOSE HIS/HER PLACE IN THE STARTING ORDER AND HE/SHE WILL BE ELIMINATED FROM THAT COMPETITION AT THE DISCRETION OF THE GROUND JURY, UNLESS CERTAIN CIRCUMSTANCES PREVENT THIS (E.G. LOSING A HORSESHOE JUST BEFORE THE START).

Riders must have the possibility to exercise their horses in an exercise area under a Steward's supervision at least 30 minutes per day outside of the competition warm-up period. Details of opening times of exercise areas must be included in the timetable.

### 4. STABLES

Size of boxes 3 m x 3 m (minimum 3m x 3m+20% 3m x 4m)

Stables will be open Saturday 17/07/2021 at 8h00.

The time and date of arrival of Athletes and horses and their means of transport must be given to the OC in time, in order to facilitate their arrival!

The NF's have to fill in a form that should be emailed to the OC before 16/07/2021.

#### VET CONTROL ON ARRIVAL

On their arrival, each truck driver must present the passports of the horses and the veterinary certificate of good health of the horses including the temperature of the horse, date from the day of departure.

The template of this form will be provided to each NF

No certificate = no entry to the showgrounds

**5. SAFETY CUPS**

Name of Manufacturer: Cardinali & Rothenberger, GmbH

**6. TIMING DEVICE**

Name of Manufacturer: IC Control  
Model: ATU-X  
FEI Report number: 22100054A

**7. SCORING/TIMING PROVIDER**

Will you use a FEI Certified Service Provider to manage the scoring and timing at your Event?

(The list of certified Service Providers is available here: <https://inside.fei.org/fei/your-role/it-services/it-providers/list>)

Yes

Name of the company: Equipe AB / Clube Hipico de Vilamoura  
FEI Certified Service Provider ID number: GU12Y101AKSCH / GU1D101IV  
Contact person at Event  
Name: Maria, Matos  
FEI ID number: 10093689  
Contact email: (compulsory)

No

Name of the company:  
Contact person at Event  
Name:  
FEI ID number:  
Contact email: (compulsory)

**Please fill in Annex XV – FEI Entry System for the Timing Provider**

The FEI may require to be provided with real time results data feed of your Events according to FEI requirements; in this case you and your provider will be informed accordingly.

**8. OTHER TECHNOLOGY/SERVICE PROVIDER(S)**

Will you use other technology/service provider(s) at your event?

Yes

Name of Company:  
Contact person:  
Name:  
FEI ID number (if applicable):  
Contact email:  
Activity/Function:  
(i.e.: Accreditations, Stable Management, Camera system, Sensors, etc...)

No

**9. PRIZE GIVING CEREMONY**

The owner of the winning horse/pony must be invited to the prize giving ceremony for the Grand Prix, if present at the event.

The number of athletes required to present themselves for the prize-giving ceremony of each

competition is 8.

All Prize Giving Ceremonies must strictly follow the **Covid-19 guidelines for Prize giving protocols and media activities.**

#### **10. ADVERTISING ON ATHLETES AND HORSES**

At CSI events, and all competitions except for the Nations Cup, athletes are authorised to carry the logo of their personal sponsor in accordance with the articles 256.3 and 257.3 of the FEI Jumping Rules.

The Chief Steward will check that the advertising on athletes and horses complies with these Articles.

#### **11. TICKETING**

Are you selling tickets for spectators to attend your event: Yes  No

Name of your ticketing provider:

Web address to buy ticket:

#### **12. BETTING**

Betting will be authorised by the Organiser: Yes  No

#### **13. TRANSPORT REIMBURSEMENT HORSES / PONIES**

Transport expenses to be paid by:

The Organiser  at \_\_\_\_\_ per km.

The Athlete

#### **14. WELCOME**

The time and date of arrival of athletes, horses and their means of transport must be given to the Organiser in order to facilitate their arrival.

#### **15. LOCAL TRANSPORTATION - ARRANGEMENTS FROM HOTEL TO SHOWGROUNDS**

Walking distance

Organiser Shuttle Service

Public Transport  to be paid by the Organiser  / the Athlete

If paid by Athlete approximate cost per round trip:

Other:

#### **16. ENTRY RIGHT TO SHOWGROUNDS/ACCREDITED PERSONS**

Entry right to the stable area according to FEI Veterinary Regulations Articles 1008-1009.

NUMBER OF ACCREDITED PERSONS:

Athlete: 1

Partner: 1

Groom: 1

Chef d'Equipe; 1 per team max

All accreditations for the Athletes, Team Veterinarian and Chefs d'Equipe will be at the show office on arrival, only the Chef d'Equipe are allowed to pick them up. Horse owners need to be registered personally to get their accreditation (max of 2 per horse).



Team Veterinarian: 1 per team max

Trainer: 1 per NF

It is the responsibility of NF's to supply the OC with all information relating to their accreditations for riders, partner, grooms, trainer, Chef d'Equipe and vet. The accreditation form provided by OC must be returned with definite entries

Horse Owner: 2 two (2) accreditations per horse acc. to FEI-Passport

## **17.SUSTAINABILITY**

Please consider the environment when organising an FEI Event. Please find useful information on FEI Sustainability here: <http://inside.fei.org/fei/your-role/organisers/handbook>

## XII. VETERINARY MATTERS

### 1. CUSTOMS FORMALITIES

Contact details for Customs Formalities:

Name: Nuno Braamcamp  
Address:  
Telephone: ++351 21 392 20 40  
Fax: ++351 21 390 77 56  
Email:  
Opening hours:

Athletes have to arrange their own transportation and are moreover responsible for arranging custom formalities. Non-EC competitors are strongly advised to travel with an ATA-carnet. There is no Custom Agency in charge.

### 2. HEALTH REQUIREMENTS

#### GENERAL

In accordance with the FEI Code of Conduct for the Welfare of the Horse it is imperative that all Horses at FEI Events are physically fit and free from infectious disease before being allowed to compete.

#### ENTRY OF HORSES

Required health tests and vaccinations:  
Quarantine period:  
Specimen Import Licence applied:

For questions or problems, please contact your Government Veterinary Services.

Space for organiser to include details if necessary

### 3. NATIONAL REQUIREMENTS

If applicable please provide:

Space for organiser to include details if necessary

### 4. PONIES

FEI Veterinary Regulations, Chapter IX and Annex IX:  
For all Pony Events, Ponies must be available for Pony Measurement if requested by the FEI.

### 5. INJURY SURVEILLANCE

FEI Veterinary Regulations, Chapter VIII:  
Horses participating in FEI Events are subject to injury surveillance protocols; and in the event

of fatality, a post mortem examination.

**6. TRANSPORT OF HORSES**

Horses must be fit to travel and be transported in suitable vehicles for the transport of horses. Any government requirements for disease testing and control must be requested well in advance, to ensure that the horse is in compliance by the time of arrival at the border of the country where the Event is taking place. Athletes, or their representatives, have the responsibility to comply with national legislation in both their country of origin and the host nation of the Event. Where necessary athletes must contact local government authorities or veterinary advisors for information regarding animal health requirements and transport legislation. Within the European Union (EU), this includes EU Council Regulation (EC) No 1/2005 concerning the protection of animals during transport within the Member States of the EU.

**7. VENUE ARRIVAL INFORMATION & FITNESS TO COMPETE**

**7.1. PASSPORTS. FEI General Regulations Article 137**

**For all issues relating to FEI Horse Passports/FEI Recognition Cards please contact your National Federation.**

All Horses competing at FEI Events must be registered with the FEI.

FEI Passports or FEI Recognition Cards (for those Horses with a national passport approved by the FEI) are compulsory for FEI Events.

NB: Horses entered in CIMs and in CSIP in their country of residence are not required to have an FEI Passport or FEI Recognition Card but must be properly registered with the FEI and identifiable (GRs 137.2).

Athletes who do not present a Horse’s Passport and/or Recognition Card, or one that is not correctly validated or fail to meet other passport requirements will be **subject to Sanctions in accordance with Annex VI of the FEI Veterinary Regulations** and may not be allowed to compete.

**NB** for Horses permanently resident in a Member State of the European Union: all Horses must have a national EU passport in compliance with EU Regulations to which a FEI Recognition card is applied. The exception to this being Horses in possession of an FEI passport which has been continually revalidated without interruption.

**7.2. VACCINATIONS - EQUINE INFLUENZA. FEI Veterinary Regulations Article 1003**

Horses competing at FEI Events must comply with the requirements for Equine Influenza vaccination in accordance with the Veterinary Regulations and as summarised below.

VACCINATION	PROTOCOL	ELIGIBILITY TO ENTER VENUE
<b>Primary Course</b>	1 <sup>st</sup> Vaccination: day 0 2 <sup>nd</sup> Vaccination: day 21-92	May compete 7 days after the 2 <sup>nd</sup> Vaccination
<b>First Booster</b>	Within 7 months of the 2 <sup>nd</sup> vaccination of the Primary Course	May compete for 6 months +21 days after the 2 <sup>nd</sup> vaccination of the Primary Course Must not compete in the 7 days after receiving a vaccination
<b>Boosters</b>	<b>MINIMUM:</b> within one year of previous booster vaccination	Must have been vaccinated within 6 months +21 days

	<b>IF COMPETING:</b> must be in the 6 months +21 days of the booster previous vaccination	before arriving at the Event Must not compete in the 7 days after receiving a vaccination
--	---	--

All FEI registered Horses intending to compete at FEI Events (including CIMs) must be vaccinated against Equine Influenza in accordance with these VRs. The exception being if the applicable domestic legislation prevents the use of Equine Influenza vaccines within the relevant territory

### **7.3. EXAMINATION ON ARRIVAL. FEI Veterinary Regulations Article 1031**

On arrival at an Event venue, all Horses must undergo an examination by a veterinarian to confirm their identification from their passport and micro-chip ID (where present), their vaccination status and general health. To protect all horses attending events, any Horse with a questionable health status concerning vaccination, disease or other concerns, must be stabled within the isolation facilities provided by the Organising Committee pending a decision on entering the venue.

### **7.4. HORSE INSPECTIONS. FEI Veterinary Regulations Articles 1034-1042**

All Horses will be assessed for their fitness to compete during the Horse Inspection. Any Horse demonstrating questionable fitness may be referred to the Holding Box for further veterinary examination. Horses not deemed fit to compete by the Inspection Panel will not be permitted to compete.

### **7.5. LIMB SENSITIVITY EXAMINATION. FEI Veterinary Regulations Articles 1048-1053**

All Horses are subject to examination under the protocol for abnormal limb sensitivity throughout the period of an Event. For Jumping that includes, but is not limited to, between rounds and before the Jump Off. Horses may be examined once or on multiple occasions during the Period of an Event.

Horses may be selected for examination under the protocol randomly or they may be targeted. All Horses selected to be tested must submit promptly to the examination or are subject to immediate disqualification. There is no obligation to examine any specific number of Horses at an Event.

## **8. EQUINE ANTI-DOPING AND CONTROLLED MEDICATION PROGRAMME (EADCMP). FEI VETERINARY REGULATIONS, CHAPTER VII**

### **8.1. SAMPLING. FEI VETERINARY REGULATIONS Chapter VII**

All horses competing at FEI Events may be subject to sampling for the presence of Prohibited Substances in accordance with the Anti-Doping and Controlled Medication Regulations (EADCMRs). Horses may be selected for sampling in accordance with obligatory testing, targeted or random sampling procedures. Refer to FEI Financial Charges for details of fees relating to Equine and Human Anti-Doping program (EADCMP), which OCs/NFs have the right to charge to the athlete (applicable for all FEI events worldwide).

### **8.2. ELECTIVE TESTING. FEI VETERINARY REGULATIONS ARTICLES 1058**

Elective Testing may be carried out prior to an Event to check for the presence of Prohibited Substances. Please refer to <https://inside.fei.org/fei/cleansport/horses> for information and details.

### XIII. HUMAN ANTI-DOPING

Athletes can be tested at any FEI Event, by the FEI or by other Anti-Doping Organisations with Testing jurisdiction. Organisers will have the responsibility to provide facilities and staff/volunteers to facilitate such Testing if requested by the FEI as outlined in article 22.3 of the FEI's Anti-doping Rules for Human Athletes (ADRHA).

The ADRHA rules are published on the FEI website at <http://inside.fei.org/content/anti-doping-rules>.

### XIV. ADDITIONAL INFORMATION

#### 1. THE FEI POLICY FOR ENHANCED COMPETITION SAFETY DURING THE COVID-19 PANDEMIC

The FEI Policy for Enhanced Competition Safety during the Covid-19 Pandemic ("Policy") (<https://inside.fei.org/system/files/FEI%20Policy%20for%20Enhanced%20Competition%20Safety%20during%20the%20Covid-19%20Pandemic%20-%20Effective%201%20July%202020%20-%20Updated%2012%20October%202020.pdf>) is mandatory and applies for any FEI Event taking place **as of 1 July 2020**. The Policy has been developed based on currently accepted best practices by the WHO and US Center for Disease Control (CDC) and will be continually reviewed and updated as more information becomes available. It is not intended to replace the applicable guidance and policies from domestic government and health authorities, but to supplement their recommendations with sport specific considerations.

The OC shall submit the risk assessment and mitigation plan (including name and contact details of the person in charge) to the FEI as an annex to the Event Schedule, **at the latest ten (10) working days before the event's deadline for Definite Entries**.

Events for which the FEI has not received the documented risk assessment and mitigation measures plan in accordance with article 2.1.g) of the Policy **will be removed from the FEI calendar** in accordance with Article 112.3 of the FEI General Regulations.

#### **ASSUMPTION OF RISK / WAIVER OF LIABILITY**

In consideration of being allowed to participate in the Event and related activities, all Participants (as defined in the Policy) acknowledge, appreciate, and agree that:

1. Participation includes possible exposure to and illness from infectious diseases including but not limited to COVID-19. While particular rules and personal discipline may reduce this risk, the risk of serious illness and death does exist; and,
2. The Participants knowingly and freely assume all such risks, both known and unknown, even if arising from the negligence of the OC or others, and assume full responsibility for their participation; and,
3. The Participants willingly agree to comply with the stated and customary terms and conditions for participation as regards protection against infectious diseases. If, however, a Participant observes any unusual or significant hazard during his/her presence or participation, the Participant will remove himself/herself from participation and bring such to the attention of the nearest official immediately; and,
4. The Participants, for themselves and on behalf of their heirs, assigns, personal representatives and next of kin, HEREBY RELEASE AND HOLD HARMLESS THE OC AND THE FEI, their officers, officials, agents, and/or employees, other participants,

sponsoring agencies, sponsors, advertisers, and if applicable, owners and lessors of premises used to conduct the event ("RELEASEES"), WITH RESPECT TO ANY AND ALL ILLNESS, DISABILITY, DEATH, or loss or damage to person or property, WHETHER ARISING FROM THE NEGLIGENCE OF RELEASEES OR OTHERWISE, to the fullest extent permitted by law.

The Participants confirm to have read this release of liability and assumption of risk agreement, fully understand its terms, understand that they have given up substantial rights.

## **2. INSURANCES AND NATIONAL REQUIREMENTS**

Equestrian sports involve inherent dangerous risks. To the greatest extent permitted by law, the FEI and the FEI Event Organiser shall NOT be liable for any damages relating to loss of property or injury of any kind to Athletes, Owners, Support Personnel or Horses at or in connection with an FEI Event and the FEI expressly excludes all such liability.

### **2.1. ATHLETES, OWNERS AND SUPPORT PERSONNEL**

#### **2.1.1. Personal Accident and Health Insurance**

It is your responsibility as an Athlete/Owner/ Support Personnel to ensure that you have adequate personal accident insurance in place to cover your participation at FEI Events and in particular to insure against any personal injury or medical expenses arising from an accident, injury or illness which may occur at a FEI Event.

You should check with your National Federation to confirm if your National Federation's insurance policy (if any) covers personal accidents and/or illnesses which may occur when you are attending/participating in FEI Events.

If your National Federation does not have a personal accident/health insurance policy or if the National Federation's insurance policy does not cover personal accident or health claims, then you should obtain your own personal accident and health insurance policy to cover your attendance/participation at FEI Events.

#### **2.1.2. Personal Property Insurance**

You should also ensure that you are insured against property loss, theft or damage which may occur at an FEI Event.

Again, the advice is to check with your National Federation to confirm if they have an insurance policy in place which would cover you in case of such property loss, theft or damage. If not, then you should obtain your own personal property insurance to cover such situations.

#### **2.1.3. Press Equipment**

Press equipment and other items left in the Press workroom, Press lockers, the Press Tribune or anywhere on the showgrounds are left entirely at the owner's risk. The Organising Committee does not accept any responsibility for any loss or damage to such equipment or items. Members of the Press are advised not to leave any equipment or personal items unattended.

## **2.2. ATHLETES AND OWNERS**

### **2.2.1. Third Party Liability Insurance**

As an Athlete/Owner you are personally responsible for damages to third parties caused by you, your employees, Support Personnel, your agents or your Horses. You are, therefore,

strongly advised to take out third-party liability insurance providing full coverage in relation to FEI Events at home and abroad, and to keep the policy up to date.

The FEI and the Organiser will NOT be responsible for any damage caused to third parties by you, your employees, Support Personnel, your agents or your Horses.

### **2.2.2. Additional Liability Information**

Space for organiser to include reference to National Laws when necessary

### **2.2.3. Horse Insurance**

As an Owner you should ensure that your Horses are adequately insured against any injuries or illnesses they may sustain while participating at a FEI Event.

Space for organiser to include reference to National Laws when necessary

## **3. PROTESTS/APPEALS**

To be valid, all Protests and Appeals must be made in writing and accompanied by a deposit of CHF 150.- or equivalent.

Protest and appeal forms are available on the FEI website:

Protests: <http://inside.fei.org/sites/default/files/FEI%20Protest%20Form.pdf>

Appeals: <http://inside.fei.org/sites/default/files/FEI%20Appeal%20Form.pdf>

## **4. SCHOOLING DURING COMPETITIONS**

Athletes wishing to school during speed competitions (Table A and Table C) must inform the OC before these competitions begin. These athletes will start first in these competitions.

## **5. STEWARDING**

- If an athlete is uncertain as to whether the boots he/she intends to use during an event are allowed, he/she or his/her representative should show the boots to the Chief Steward for his/her opinion before the boots are used in training or in competition.
- In addition, athletes are to be made aware that hind boots must be removed and placed again on the horse's legs in the presence of a Steward while in the warm-up arena prior to entering the competition arena for certain competitions. (If bandages are used in place of boots, athletes are not required to remove the bandages in the warm-up arena.) This procedure is compulsory for competitions for which boot and bandage control is mandatory, that is the Nations Cup, Grand Prix, and the competition with the highest prize money, and is at the discretion of the Chief Steward for other competitions.
- As an alternative to carrying out this procedure at the time designated by the Steward an athlete may ask his/her groom to take the boots to the in-gate and place them on the horse's legs in front of the Steward prior to the combination entering the arena.

- The Steward has the authority to intervene if a boot is deemed excessively tight by instructing that the boot be removed and put on again correctly. *[Stewards are to note that it is normal for a horse's gait to be somewhat affected immediately after boots have been removed and re-placed.]* If an athlete or his/her groom refuses to remove and replace the boot(s) when instructed to do so by the Steward, a Yellow Warning Card will be issued to the athlete in question.
- If it is deemed impossible or unsafe to remove the hind boots in the warm-up arena prior to the combination entering the competition arena, due to an extremely excited or nervous horse, the boots of the horse in question are to be removed by the athlete/groom following the athlete's round upon leaving the arena and inspected by the Steward. This inspection may be carried out during the boot and bandage control if the boot and bandage control is carried out for the competition in question.
- This procedure does not replace boot and bandage control after completion of an athlete's round for competitions for which boot and bandage control is mandatory (refer to JRs Art. 244.1).

## **6. DISPUTES**

In the event of any discussion concerning the interpretation of the schedule (in translated languages), the English version will be decisive.

## **7. MODIFICATION TO SCHEDULE**

In exceptional circumstances, together with the approval of Chefs d'Equipe, host NF delegate, if any, and the Ground Jury, the Organiser may change the schedule in order to clarify any matter arising from an omission or due to unforeseen circumstances. Any such changes must be notified to all athletes and officials as soon as possible and they must be reported to the FEI Secretary General by the Technical Delegate, the President of the Ground Jury or the Foreign Judge, as applicable.

## **8. ADDITIONAL INFORMATION FROM THE OC**

### **GENERAL**

Athletes and others involved in EJC Vilamoura 2021 must make themselves conversant with these general regulations in addition to the special conditions applicable to the various competitions.

Athletes may only compete on the understanding that they comply with and are bound by these regulations and the special conditions relating to each competition.

### **IMAGE RIGHTS**

The Organising Committee reserves the right to use - without any compensation due - photographs, slides, video tapes or any other (digital) registered picture from athletes and/or horses, made or registered during EJC Vilamoura 2021, for promotional and/or marketing purposes, related to the event.

It is a condition of entry that all athletes will permit any photographic or filmed material derived during the course of the event, to be utilized subsequently by the Organising Committee for future promotion of their business interests or the show at no cost to the latter.

### **INCIVILITY**

Any act of discourtesy to any Judge, Steward or any show officials on the part of the athlete, groom, driver or agent of a horse may at the discretion of the President of the



Ground Jury disqualify that horse from being judged, in which case entry fees, prizes and charges will be forfeited.

#### PARADING

All horses must be paraded whenever so ordered by the Organizing Committee or an authorized show official. Any failure to comply with this rule may result in disqualification from competing and forfeiture of prizes, at the discretion of the Ground Jury.

#### STARTS

During the competition three competitors have to be mounted and ready to enter the arena. If a competitor does not react upon calling his start number, his turn will pass and the combination will be eliminated from that particular competition. (Unless certain circumstances prevent him from appearing at that time, e.g. losing a shoe, before his turn to start)

#### HORSE PROTECTION

From the time the competitors enter the showground they are obliged to adhere to the Regulations of the Portuguese Law for animal protection. In case of infringements the respective Athlete at discretion of the Ground Jury will be suspended from the event and may lose any right or privilege he/she is entitled to.

#### DOGS

Dogs must be on a leash during the whole event. Offences against this rule, first will incur a 100€ fine and in case of a repeated offence, will lead to permanent exclusion from the stables.

#### SMOKING

It is strictly forbidden to smoke in the stables. Infringement can be sanctioned by the Ground Jury by definite banning out of the stable area and/or fine of 500€

#### HOSPITALITY

The Organising Committee offers the possibility to buy VIP-tables for the entire duration of the event. Information can be obtained via the event secretary. Reservations have to be sent, together with the entries.

#### FINAL CONDITIONS

Simply by enrolling a horse into EJC Vilamoura 2021 the Person Responsible fully accepts the conditions of the schedule and the programme itself, applicable for the competitors, grooms and the horses. In case of a dispute with regard to the interpretation of this official schedule, the English text takes precedence on.

# FEI APPROVED SCHEDULE

## Vilamoura (POR) 18-25 July 2021

### Age of Athletes and Horses according to the Event's Category

Event's Category	Age of Athletes (Refer to JRs 255)	Age of Horses
<b>Olympic Games/WEG</b>	As of 18 <sup>th</sup> year	Min 9 y.o.
<b>Continental Championships Senior</b>	As of 18 <sup>th</sup> year	Min 8 y.o.
<b>Regional Championships/Games</b>	As of 18 <sup>th</sup> year As of 16 <sup>th</sup> year if height of obstacles max.1.40m (JRs Annex IX, Art. 6.1)	Min. 8 y.o. Min. 7 y.o. if height of obstacles max. 1.40m (JRs Art. 254.1.1)
<b>World Cup Final</b>	As of 18 <sup>th</sup> year	Min. 9 y.o.
<b>Nations Cup Final</b>	As of 18 <sup>th</sup> year	Min. 8 y.o.
<b>CSI-W3*-5*/CSIO3*-5*/CSI3*-5*</b> Grand Prix, World Cup, Nations Cup, Power and Skill, Derby or Competition with the highest prize money Other Competitions Other Competitions if height max. 1.40m Other Competitions if height max. 1.30m	As of 18 <sup>th</sup> year As of 16 <sup>th</sup> year As of 14 <sup>th</sup> year As of 12 <sup>th</sup> year	Min. 7 y.o.
<b>CSIO1*-2*/CSIO-W1*-2*</b> Grand Prix, World Cup, Nations Cup, Power and Skill, Derby or Competition with the highest prize money Other Competitions Other Competitions if height max. 1.40m Other Competitions if height max. 1.30m	As of 18 <sup>th</sup> year As of 16 <sup>th</sup> year As of 14 <sup>th</sup> year As of 12 <sup>th</sup> year	Min. 6 y.o. *
<b>CSI-W2*/CSI2*</b> World Cup, Power and Skill, Derby Grand Prix, if not the World Cup Competition, and other Competitions Grand Prix, if not the World Cup Competition, and other Competitions if height max. 1.40m Grand Prix, if not the World Cup Competition, and other Competitions if height max. 1.30m	As of 18 <sup>th</sup> year As of 16 <sup>th</sup> year As of 14 <sup>th</sup> year As of 12 <sup>th</sup> year	Min. 6 y.o.
<b>CSI-W1*/CSI1*</b> World Cup, Power and Skill, Derby Grand Prix, if not the World Cup Competition, and other Competitions Grand Prix, if not the World Cup Competition, and other Competitions if height max. 1.30m	As of 18 <sup>th</sup> year As of 14 <sup>th</sup> year As of 12 <sup>th</sup> year	Min. 6 y.o.
<b>CH-Y</b>	As of 16 <sup>th</sup> year to end 21 <sup>st</sup> year	Min. 7 y.o.
<b>CSI/CSIO-Y</b>	As of 16 <sup>th</sup> year to end 21 <sup>st</sup> year	Min. 7 y.o.
<b>CH-J</b>	As of 14 <sup>th</sup> year to end 18 <sup>th</sup> year	Min. 7 y.o.
<b>CSI/CSIO-J</b>	As of 14 <sup>th</sup> year to end 18 <sup>th</sup> year	Min. 6 y.o.
<b>CSI/CSIO-Ch/CH-Ch</b>	As of 12 <sup>th</sup> year to end 14 <sup>th</sup> year	Min. 6 y.o.
<b>CSI/CSIOP/CH-P</b>	As of 12 <sup>th</sup> year to end 16 <sup>th</sup> year Ponies must be registered as ponies with FEI	Min. 6 y.o.
<b>CSIU-25</b>	As of 16 <sup>th</sup> year to end 25 <sup>th</sup> year for all CSIU-25 comp. As of 14 <sup>th</sup> year if height max. 1.40m (to end 25 <sup>th</sup> year)	Min. 7 y.o.
<b>CSIV</b>	As of 45 <sup>th</sup> year	Min. 6 y.o.
<b>CSIAm</b>	As of 12 <sup>th</sup> year until end of 13 <sup>th</sup> year if competition height is max. 1.30 m; as of 14 <sup>th</sup> year if height exceeds 1.30 m.	Min. 6 y.o.
<b>CSIYH</b>	Per Art. 255.2	Min. 5 y.o. – Max. 8 y.o.
<b>CH-M-YH-S</b>	As of 18 <sup>th</sup> year or 16 year for athletes qualified with the same horse	5 y.o. / 6 y.o. / 7 y.o.

\*Art. 254.1.1: Horses entered for CSIO2\* Events at which the Nations Cup is built to the dimensions set forth in JRs Art. 264.3 for 2\* Events must be at least 6 years old; Horses entered for CSIO2\* Events at which the Nations Cup is built to the dimensions set forth in JRs Art. 264.3 for 3\* Events or higher must be at least 7 years old.

9. PRIZE MONEY DISTRIBUTION

Prize Money Distribution Chart 1: Prize money distribution with 25% of prize money for the winner updated 30.01.2019

N° of starters	up to 11	12-48	49-100	101-110 declared starters	111-120 declared starters				
N° of prizes	Same as the number of starters who finish the competition	12	First 12 acc. to percentages below; extra prizes for 13 <sup>th</sup> to last*	First 16 acc. to percentages below; extra prizes for 17 <sup>th</sup> to last*	First 20 acc. to percentages below; extra prizes for 21 <sup>st</sup> to last*				
Prize money	Example: Competition prize money = 40'000.-	100% = 40'000	100% = 40'000	133% = 53'200	166% = 66'400				
		%	%	%	%				
1	All athletes who complete the competition receive prize money, to be distributed according to the percentages at right from the 1 <sup>st</sup> placed to the last placed athlete. The remaining prizes, i.e. the prizes foreseen up to 12 <sup>th</sup> place, are then distributed in descending order starting again with the 1 <sup>st</sup> placed athlete until there are no more prizes to be distributed. See examples below. 5 athletes: winner gets prize for 1 <sup>st</sup> (25%) and the other athletes get the relevant percentages down to the last athlete, i.e. 5 <sup>th</sup> place (7%). The prize for 6 <sup>th</sup> (5.5%) is then given to the winner, the prize for 7 <sup>th</sup> (4%) is given to the 2 <sup>nd</sup> placed athlete, the prize for 8 <sup>th</sup> (3%) is given to the 3 <sup>rd</sup> placed athlete, the prize for 9 <sup>th</sup> (3%) is given to the 4 <sup>th</sup> placed athlete and the prize for 10 <sup>th</sup> (2.5%) is given to the 5 <sup>th</sup> placed athlete. The prize for 11 <sup>th</sup> (2.5%) is then given to the 1 <sup>st</sup> placed athlete and the prize for 12 <sup>th</sup> (2.5%) is given to the 2 <sup>nd</sup> placed athlete. 10 athletes: winner gets prize for 1 <sup>st</sup> (25%) and 11 <sup>th</sup> (2.5%), second placed gets prize for 2 <sup>nd</sup> (20%) and 12 <sup>th</sup> (2.5%); the remaining athletes receive the prize money for their placing as per the percentages from 3 <sup>rd</sup> to 10 <sup>th</sup> place.	25	10'000	25	10'000	25	13'300	25	16'600
2		20	8000	20	8000	20	10'640	20	13'280
3		15	6000	15	6000	15	7980	15	9960
4		10	4000	10	4000	9	4788	8	5312
5		7	2800	7	2800	6.5	3458	6	3984
6		5.5	2200	5.5	2200	5	2660	4.5	2988
7		4	1600	4	1600	3.5	1862	3	1992
8		3	1200	3	1200	2.5	1330	2.5	1660
9		3	1200	3	1200	2.5	1330	2.5	1660
10		2.5	1000	2.5	1000	2	1064	2	1328
11		2.5	1000	2.5	1000	2	1064	2	1328
12	n/a	2.5	1000	2.5	1000	2	1064	2	1328
Total	40'000	100%	40'000	100%	40'000				
13				Extra prizes for 13 <sup>th</sup> to last place*	1.5	798	1.5	996	
14					1.5	798	1.5	996	
15					1	532	1	664	
16					1	532	1	664	
Total					100%	53'200			
17				Extra prizes for 17 <sup>th</sup> to last place*			1	664	
18							0.5	332	
19							0.5	332	
20							0.5	332	
Total							100%	66'400	
								Extra prizes for 21 <sup>st</sup> to last place*	
* The OC must provide additional prizes for the remaining placed athletes to fulfil quota of one prize per four athletes. The amount to be given to each of these athletes must be stated in the Schedule.									

Prize Money Distribution Chart 2: Prize money distribution with 33% of prize money for the winner updated 30.01.2019

N° of starters	up to 11	12-48	49-100	101-110 declared starters	111-120 declared starters				
N° of prizes	Same as the number of starters who finish the competition	12	First 12 acc. to percentages below; extra prizes for 13 <sup>th</sup> to last*	First 16 acc. to percentages below; extra prizes for 17 <sup>th</sup> to last*	First 20 acc. to percentages below; extra prizes for 21 <sup>st</sup> to last*				
Prize money	Example: Competition prize money = 40'000.-	100% = 40'000	100% = 40'000	133% = 53'200	166% = 66'400				
		%	%	%	%				
1	All athletes who complete the competition receive prize money, to be distributed according to the percentages at right from the 1 <sup>st</sup> placed to the last placed athlete. The remaining prizes, i.e. the prizes foreseen up to 12 <sup>th</sup> place, are then distributed in descending order starting again with the 1 <sup>st</sup> placed athlete until there are no more prizes to be distributed. See examples below. 5 athletes: winner gets prize for 1 <sup>st</sup> (25%) and the other athletes get the relevant percentages down to the last athlete, i.e. 5 <sup>th</sup> place (7%). The prize for 6 <sup>th</sup> (5.5%) is then given to the winner, the prize for 7 <sup>th</sup> (4%) is given to the 2 <sup>nd</sup> placed athlete, the prize for 8 <sup>th</sup> (3%) is given to the 3 <sup>rd</sup> placed athlete, the prize for 9 <sup>th</sup> (3%) is given to the 4 <sup>th</sup> placed athlete and the prize for 10 <sup>th</sup> (2.5%) is given to the 5 <sup>th</sup> placed athlete. The prize for 11 <sup>th</sup> (2.5%) is then given to the 1 <sup>st</sup> placed athlete and the prize for 12 <sup>th</sup> (2.5%) is given to the 2 <sup>nd</sup> placed athlete. 10 athletes: winner gets prize for 1 <sup>st</sup> (25%) and 11 <sup>th</sup> (2.5%), second placed gets prize for 2 <sup>nd</sup> (20%) and 12 <sup>th</sup> (2.5%); the remaining athletes receive the prize money for their placing as per the percentages from 3 <sup>rd</sup> to 10 <sup>th</sup> place.	33	13'200	33	13'200	33	17'556	33	21'912
2		20	8000	20	8000	19.5	10'374	19.5	12'948
3		15	6000	15	6000	14.5	7714	14.5	9628
4		10	4000	10	4000	9.5	5054	8.5	5644
5		6	2400	6	2400	5.5	2926	5	3320
6		4.5	1800	4.5	1800	4	2128	3.5	2324
7		3	1200	3	1200	2.5	1330	2.5	1660
8		2.5	1000	2.5	1000	2	1064	2	1328
9		2	800	2	800	2	1064	2	1328
10		2	800	2	800	2	1064	2	1328
11		1	400	1	400	1	532	1	664
12	n/a	1	400	1	400	1	532	1	664
Total	40'000	100%	40'000	100%	40'000				
13				Extra prizes for 13 <sup>th</sup> to last place*	1	532	1	664	
14					1	532	1	664	
15					1	532	1	664	
16					0.5	266	0.5	332	
Total					100%	53'200			
17				Extra prizes for 17 <sup>th</sup> to last place*			0.5	332	
18							0.5	332	
19							0.5	332	
20							0.5	332	
Total							100%	66'400	
								Extra prizes for 21 <sup>st</sup> to last place*	
* The OC must provide additional prizes for the remaining placed athletes to fulfil quota of one prize per four athletes. The amount to be given to each of these athletes must be stated in the Schedule.									

In case of a tie for the 12<sup>th</sup> place in a competition with 12 to 48 starters, the prize money foreseen for the 12<sup>th</sup> place will be divided equally among the athletes concerned.

**For Competitions run in two rounds with more than 12 starters in 2<sup>nd</sup> round:**

OCs that indicate in the schedule that a specific number (that is more than 12) of athletes will return for the second round will be permitted to distribute the prize money for that competition among all the athletes taking part in the second round, even if the second round is followed by a jump-off in case of a tie on penalties for first place after the second round.

**DEDUCTIONS FROM PRIZE MONEY AT COMPETITIONS:**

Full details of any deductions from prize money must be outlined in the schedule. This includes government taxes. If it is necessary for Organisers to deduct such taxes, they must provide participants with an official form indicating the amount of tax deducted.

**The tax form must be provided to the athletes upon arrival and returned to the Organiser prior to departing.**

Non Resident Riders (Riders without Portuguese Fiscal ID):

With or without legal document (invoice or receipt) as individual entities or companies. Retention of 25% is made on the amount paid.

Due to the existence of different taxations, the prize values presented will be the gross value, before taxation.

**IMPORTANT**

**The total amount of prize money shown for each Competition in the schedule must be distributed. (FEI General Regulations articles 127 and 128)**

For details of the prize money breakdown for each competition please refer to the tables at the end of this document; the Organiser must specify which of the two (2) tables will be used. The total prize money for the Competition must be distributed among the first twelve (12) placed athletes.

The Organiser must provide additional prizes for athletes placed beyond twelfth (12<sup>th</sup>) place. The minimum amount for each of these additional prizes, for athletes placed from thirteenth (13<sup>th</sup>) to last place, must be clearly specified in the approved schedule and not exceed the prize money of the athlete placed twelfth (12<sup>th</sup>)

**10. MAXIMUM NUMBER OF STARTERS PER COMPETITION**

**\*Annex VI FEI Jumping Rules:**

Maximum 100 starters per Competition other than the GP. If more than 100 starters are declared, the OC must provide the following percentages of additional prize money for every ten declared starters, up to 120 declared starters:

- 101 to 110 declared starters: the OC must provide 133% of the original Competition prize money, which is to be distributed among the 16 best placed athletes in the Competition according to the prize money distribution chart I or II. The additional prize money provided by the OC is not taken into consideration with regard to the overall prize money that determines the star level of the Event or the Longines Ranking point group of the Competition, if applicable.
- 111 to 120 declared starters: the OC must provide 166% of the original Competition prize money, which is to be distributed among the 20 best placed athletes in the Competition according to the prize money distribution chart I or II. The additional prize money provided by the OC is not taken into consideration with regard to the overall prize money that determines the star level of the Event or the Longines Ranking point group of the Competition, if applicable.

If more than 120 starters are declared, the OC must split the Competition into two groups and provide 200% of the original Competition prize money which is to be divided equally between the two groups. The additional prize money provided by the OC is not taken into consideration with

regard to the overall prize money that determines the star level of the Event or the Longines Ranking point group of the Competition, if applicable.

OCs may apply either of the following methods for splitting the Competition:

The competition is split into two groups before it starts. There may be athletes with multiple horses in each group but all horses of any one athlete must be in the same group. If it is not possible to have two groups of equal size there may be a different number of starters in each group;

OR

The competition is run as one single competition and split afterward into two groups and the classification established as follows: the athlete with the best score is the winner of the first group, the athlete with the second best score is the winner of the second group and so on until prizes have been allocated to 25% of the total number of starters. *NB: In this case separate results must be sent to the FEI for each of the two groups, e.g. results for Competition 1a and for Competition 1b.*

In both cases above each group must offer the same amount of prize money. For the avoidance of doubt, it is the number of declared starters in the Competition, not the final number of starters, that determines whether the Competition must be split.

If there are more than 200 declared starters, the OC must split the Competition into three groups and provide the same percentages of additional prize money as indicated above (100% of original Competition prize money to be provided for each of the three groups if each group has 100 or fewer starters; 133% of original prize money to be provided for each group if any of the three groups has 101-110 starters; 166% of original prize money to be provided for each if any of the three groups has 111-120 starters).

<sup>3</sup> For CSI-W Events with a Grand Prix Competition in addition to the FEI World Cup™ competitions, the minimum prize money requirements indicated above for the Grand Prix apply only to the FEI World Cup™ Competition as it has the status of a Grand Prix; the Grand Prix Competition at such Events cannot offer more prize money than the prize money offered for the FEI World Cup™ Competition. Refer to the FEI Jumping World Cup™ rules for details relating to date of implementation of this rule at CSI-W Events.

## **11. GLOSSARY**

### **\*Glossary FEI Jumping Rules:**

#### **Fees:**

- Compulsory Fee: Compulsory Fees are fees that may be charged by the OC for costs/services not included in the Entry Fee. Compulsory Fees, if charged, must be paid by the Athletes concerned as outlined below. Only the following Compulsory Fees may be charged by the OC, providing full details of the amount to be charged is included in the Schedule and approved by the FEI:
  - NF fee if applicable
  - NF medication control programme fee if applicable
  - FEI EADCMR fee if applicable (OC to indicate in the Schedule if the EADCMR fee is included in the Entry Fee or not)
  - Fee for health/customs-related documents for Horses if these have been requested by the Athlete.
  - Fee for manure disposal (maximum € 40 per horse per Event)
  - Fee for lorry parking if applicable (The fee indicated in the Schedule may only be charged per lorry not per Athlete.)
  - Fee for electric hook-up for lorry (The fee indicated in the Schedule may only be charged per lorry, not per Athlete.)
- Discretionary Fee: Discretionary Fees are fees that may be charged for optional commodities/services that may be purchased by an Athlete if he so chooses and that do not affect the equity of the Athlete's right to compete at the Event or the well-being of the Horse, such as:

- VIP or premium parking
  - VIP table
  - Extra box for tack or for non-competing Horse
  - Extra bedding and/or fodder (details to be included e.g. shavings, straw, hay)
  - Premium stabling (all stabling at the Event must meet minimum FEI requirements)
- Entry Fee: The Entry Fee is the fee charged to participate in an Event with one Horse and covers the following:
- Stabling of one Horse for the duration of the Event (includes cleaning and disinfecting stables before the event, including between Events that are part of Tours, water and electricity in the stables, first bedding or a fixed amount of bedding depending on the type of event and 24 hour security services for the stables)
  - Use of all facilities at the Event (no infrastructure fees may be charged)
  - Right to participate in all Competitions in accordance with the conditions in the Schedule (no nomination fees or start fees may be charged)
  - Administrative/Office fees (includes all services relating to administration of the Event and running of the Competitions: data/results/timing services, bookkeeping and accreditation services)



## XV. ANNEXES

### 1. FEI ENTRY SYSTEM

Please fill the form below in order to provide you and the other members of your committee or your IT Providers access to the FEI Entry System.

**FEI ID<sup>1</sup>:** 10200799  
**Name\*:** Fontaneda  
**First Name\*:** Carolina  
**E-Mail\*:** vilamouraequestriancentre@gmail.com  
**Access Rights\*:**  Admin<sup>2</sup>  Consult<sup>3</sup>  
**Events<sup>4</sup>:** All

---

**FEI ID<sup>1</sup>:** 10093689  
**Name\*:** Matos  
**First Name\*:** Maria  
**E-Mail\*:** alubox@outlook.pt  
**Access Rights\*:**  Admin<sup>2</sup>  Consult<sup>3</sup>  
**Events<sup>4</sup>:** All

---

**FEI ID<sup>1</sup>:** 10075849  
**Name\*:** Reinas  
**First Name\*:** Joao  
**E-Mail\*:** jgreinas@jgreinas.com  
**Access Rights\*:**  Admin<sup>2</sup>  Consult<sup>3</sup>  
**Events<sup>4</sup>:** All

---

<sup>1</sup> If already have an FEI user account.

<sup>2</sup> Provides you the required access to manage entries and substitutions and download entries/lists.

<sup>3</sup> You are just able to consult and download the entries/lists.

<sup>4</sup> Leave the field blank if the user deals with the entries of all events in the show.

\* **Mandatory Fields**

## **2. RESULTS**

In order to proceed with the results publication and for qualification purposes the FEI requires results **to be uploaded directly on the FEI Database** within two days after the conclusion of the event.

All relevant information, file format and tutorial can be found on this page:

<https://inside.fei.org/fei/your-role/it-services/xml-format>

If you or your provider are unable to produce the required files, results will be accepted by e-mail to [results@fei.org](mailto:results@fei.org), in the proper Excel or "XML" format immediately after the event.

Please refer to compulsory format for CSIs/CSIOs/Championships and Games; the file can be downloaded using the following link:

<https://inside.fei.org/fei/your-role/it-services/results/jumping-results-forms>

**All results must include FEI Passport Registration number of horses and FEI ID number of Riders.**

Please note that as per Art. 109.6 (GR): OCs of International Jumping Events must inform the FEI and NFs whose teams or individuals have taken part, of the results and prize money paid to each placed Athlete and team, within two (2) days following the Event, unless otherwise specified for qualification and ranking reasons as communicated by the FEI. Failure from OCs of International Events to provide the FEI with the appropriate result(s) and/or prize money information by the aforesaid deadline and/or in the aforesaid format shall entail a warning for the first violation and thereafter a fine of CHF 1'000.- per violation.

The FEI may request a copy of the official PDF result signed by the relevant Officials at the Event.

**THE APPENDIX (8 PAGES) IS PART OF THIS APPROVED AND SIGNED SCHEDULE AND MUST BE DISTRIBUTED TO ALL OFFICIALS AND NFs AND IS AVAILABLE TO OTHERS UPON REQUEST**